



Product Datasheet  
**Mouse/Human CD44 Monoclonal Antibody  
(PE Conjugated) (AGEL0366)**  
Catalogue Code: AGEL0366

## Antibody Data

<b>Product SKU:</b>	AGEL0366	<b>Clone</b>	IM7
<b>Applications:</b>	FC	<b>Conjugate</b>	PE
<b>Reactivity:</b>	Mouse, Human		

## Immunogen Information:

**Gene ID:** 12505960

**Swiss Prot:** P15379,P16070

**Synonyms:** CD44 antigen, CD44, CDw44, Epican, Phagocytic glycoprotein 1, PGP-1, Phagocytic glycoprotein I, PGP-I, CD44, LHR, MDU2, MDU3, MIC4

## Product Information:

**Host Species:** Rat

**Isotype:** Rat IgG2b

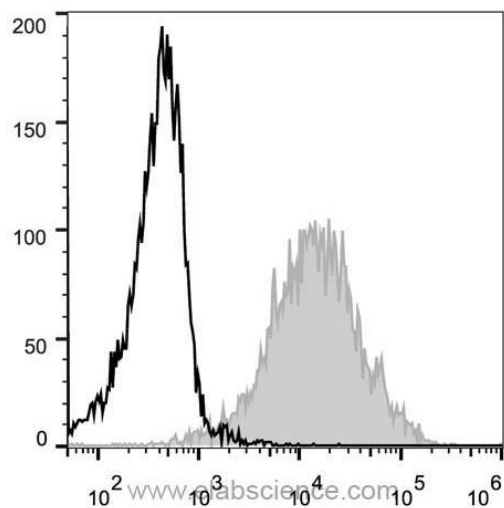
**Storage:** PBS with 0.05% Proclin300, 1% BSA

**Recommended Dilution:** Each lot of this antibody is quality control tested by immunofluorescent staining with flow cytometric analysis. The amount of the reagent is suggested to be used 5  $\mu$ L of antibody per test (million cells in 100  $\mu$ L staining volume or per 100  $\mu$ L of whole blood). Please check your vial before the experiment. Since applications vary, the appropriate dilutions must be determined for individual use.

## Background:

CD44 is a 80-95 kD glycoprotein also known as Hermes, Pgp1, H-CAM, or HUTCH. It is expressed on all leukocytes, endothelial cells, hepatocytes, and mesenchymal cells. As B and T cells become activated or progress to the memory stage, CD44 expression increases from low or mid levels to high levels. Thus, CD44 has been reported to be a valuable marker for memory cell subsets. High CD44 expression on Treg cells has been associated with potent suppressive function via high production of IL-10. CD44 is an adhesion molecule involved in leukocyte attachment to and rolling on endothelial cells, homing to peripheral lymphoid organs and to the sites of inflammation, and leukocyte aggregation.

## Images:



C57BL/6 murine splenocytes are stained with Anti-Mouse/Human CD44 Monoclonal Antibody(PE Conjugated)(filled gray histogram). Unstained splenocytes (empty black histogram) are used as control.