

**Antibody Data**

<b>Product SKU:</b>	<b>AGEL3010</b>	<b>Clone:</b>	<b>G10F5</b>
<b>Applications:</b>	<b>FCM</b>		
<b>Reactivity:</b>	<b>Human</b>		

**Important Note:**

Centrifuge before opening to ensure complete recovery of vial contents.

**Product Information:**

**Alternate Names:** Carcinoembryonic antigen-related cell adhesion molecule 8;CD67;CGM6;NCA-95;CEACAM8;

**Uniprot ID:** P31997

**Background:** CD66b is a 95-100 kD glycosylphosphatidylinositol (GPI)-linked protein also known as CD67, CGM6, and NCA-95. CD66b is a member of the immunoglobulin superfamily, carcinoembryonic antigen (CEA)-like subfamily. CD66b, expressed on granulocytes, has been reported to induce activation in neutrophils and to be involved in heterophilic adhesion with CD66c.

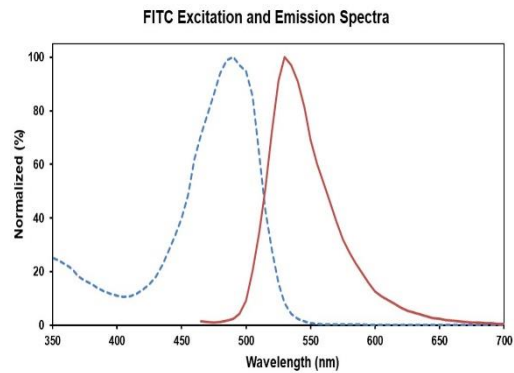
**Form:** Liquid

**Conjugation:** FITC

**Size:** 20 Tests, 100 Tests, 200 Tests

**Host Species:** Mouse

**Isotype:** Mouse IgM, κ



**Isotype Control:** FITC Mouse IgM, κ Isotype Control[MM-30] [Product AGEL3010]

**Storage Buffer:** Phosphate buffered solution, pH 7.2, containing 0.09% stabilizer and 1% protein protectant.

**Shipping:** Biological ice pack at 4°C

**Stability & Storage:** Keep as concentrated solution. Store at 2~8°C and protected from prolonged exposure to light. Do not freeze. Centrifuge before opening to ensure complete recovery of vial contents. This product is guaranteed up to one year from purchase.

**Recommended Usage:** Each lot of this antibody is quality control tested by flow cytometric analysis. The amount of the reagent is suggested to be used 5  $\mu$ L of antibody per test (million cells in 100  $\mu$ L staining volume or per 100  $\mu$ L of whole blood). Please check your vial before the experiment. Since applications vary, the appropriate dilutions must be determined for individual use.