

Tau Rabbit Polyclonal Antibody



CAB0002

Product Information

Size:

20uL, 50uL, 100uL, 200uL

Observed MW:

53kDa

Calculated MW:

32-45kDa/78- 80kDa

Applications:

WB IHC IF

Reactivity:

Human, Mouse, Rat

Antibody Information

Recommended dilutions:

WB 1:500 - 1:2000 IHC 1:50
- 1:200 IF 1:50 - 1:200

Source:

Rabbit

Isotype:

IgG

Purification:

Affinity purification

Protein Background

This gene encodes the microtubule-associated protein tau (MAPT) whose transcript undergoes complex, regulated alternative splicing, giving rise to several mRNA species. MAPT transcripts are differentially expressed in the nervous system, depending on stage of neuronal maturation and neuron type. MAPT gene mutations have been associated with several neurodegenerative disorders such as Alzheimer's disease, Pick's disease, frontotemporal dementia, cortico-basal degeneration and progressive supranuclear palsy.

Immunogen information

Gene ID:

4137

Uniprot

P10636

Synonyms:

DDPAC; FTDP-17; MAPTL; MSTD; MTBT1; MTBT2; PPND; PPP1R103;
TAU; MAPT; Tau

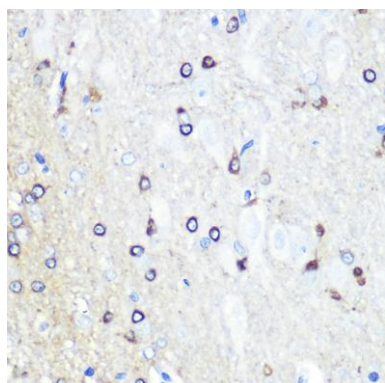
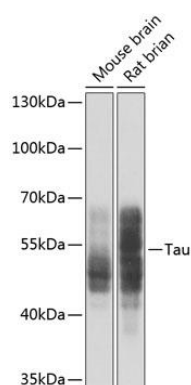
Immunogen:

A synthetic peptide corresponding to a sequence within amino acids 600 to the C-terminus of human Tau (NP_058519.3).

Storage:

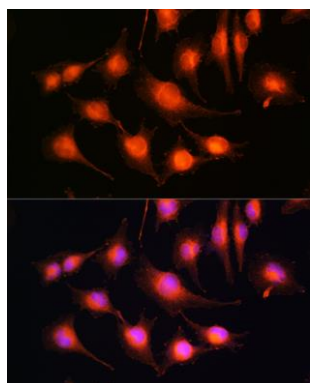
Store at -20°C. Avoid freeze / thaw cycles. Buffer: PBS with 0.02% sodium azide, 50% glycerol, pH7.3.

Product Images

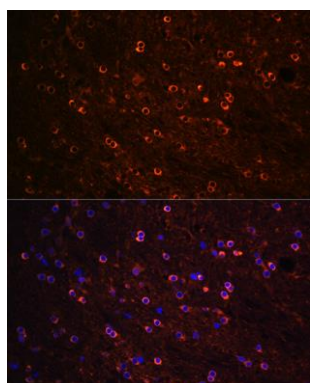


Western blot - Tau Rabbit pAb (CAB0002)

Immunohistochemistry of paraffin-embedded rat brain using Tau Rabbit pAb (CAB0002) at dilution of 1:100 (40x lens).



Immunofluorescence analysis of U-251 MG cells using Tau Rabbit pAb (CAB0002) at dilution of 1:100 (40x lens). Blue: DAPI for nuclear staining.



Immunofluorescence analysis of rat brain using Tau Rabbit pAb (CAB0002) at dilution of 1:100 (40x lens). Blue: DAPI for nuclear staining.