

# STAT1 Rabbit Polyclonal Antibody



CAB0027

## Product Information

### Size:

20uL, 50uL, 100uL, 200uL

### Observed MW:

90kDa

### Calculated MW:

83kDa/87kDa

### Applications:

WB IHC

### Reactivity:

Human, Mouse, Rat

## Antibody Information

### Recommended dilutions:

WB 1:500 - 1:2000 IHC 1:50  
- 1:200

### Source:

Rabbit

### Isotype:

IgG

### Purification:

Affinity purification

## Protein Background

The protein encoded by this gene is a member of the STAT protein family. In response to cytokines and growth factors, STAT family members are phosphorylated by the receptor associated kinases, and then form homo- or heterodimers that translocate to the cell nucleus where they act as transcription activators. This protein can be activated by various ligands including interferon-alpha, interferon-gamma, EGF, PDGF and IL6. This protein mediates the expression of a variety of genes, which is thought to be important for cell viability in response to different cell stimuli and pathogens. Two alternatively spliced transcript variants encoding distinct isoforms have been described.

## Immunogen information

### Gene ID:

6772

### Uniprot

P42224

### Synonyms:

CANDF7; IMD31A; IMD31B; IMD31C; ISGF-3; STAT91; STAT1 alpha;  
STAT1

### Immunogen:

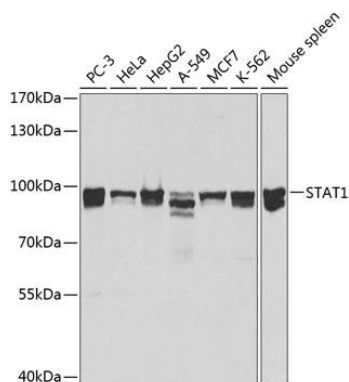
Recombinant fusion protein containing a sequence corresponding to amino acids 513-712 of human STAT1 (NP\_644671.1).

### Storage:

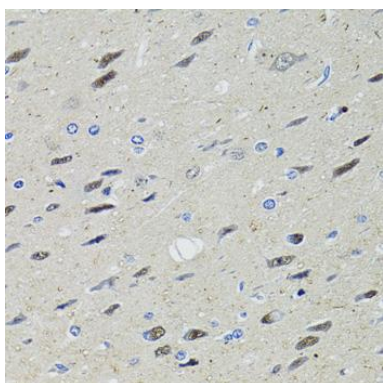
Store at -20°C. Avoid freeze / thaw cycles. Buffer: PBS with 0.02% sodium azide, 50% glycerol, pH7.3.

## Product Images

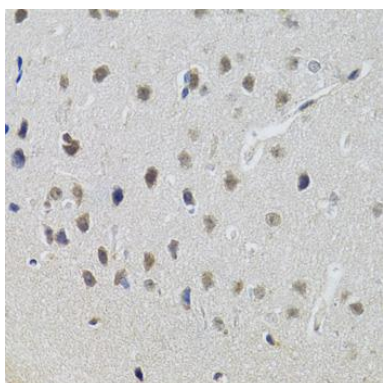
---



Western blot analysis of extracts of various cell lines, using STAT1 antibody (CAB0027) at 1:1000 dilution. Secondary antibody: HRP Goat Anti-Rabbit IgG (H+L) (CABS014) at 1:10000 dilution. Lysates/proteins: 25ug per lane. Blocking buffer: 3% nonfat dry milk in TBST.



Immunohistochemistry of paraffin-embedded rat brain using STAT1 antibody (CAB0027) at dilution of 1:100 (40x lens).



Immunohistochemistry of paraffin-embedded mouse brain using STAT1 antibody (CAB0027) at dilution of 1:100 (40x lens).