

MSH2 Rabbit Polyclonal Antibody



CAB0064

Product Information

Size:

100uL, 200uL

Observed MW:

150kDa

Calculated MW:

97kDa/104kDa

Applications:

WB IF FC

Reactivity:

Human

Protein Background

This locus is frequently mutated in hereditary nonpolyposis colon cancer (HNPCC). When cloned, it was discovered to be a human homolog of the E. coli mismatch repair gene mutS, consistent with the characteristic alterations in microsatellite sequences (RER+ phenotype) found in HNPCC. Two transcript variants encoding different isoforms have been found for this gene.

Immunogen information

Gene ID:

4436

Uniprot

P43246

Synonyms:

MSH2; COCA1; FCC1; HNPCC; HNPCC1; LCFS2

Antibody Information

Recommended dilutions:

WB 1:500 - 1:1000 IF 1:20 -
1:50 FC 1:20 - 1:50

Source:

Rabbit

Isotype:

IgG

Purification:

Affinity purification

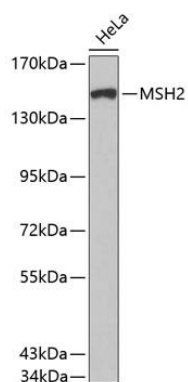
Immunogen:

A synthetic peptide of human MSH2

Storage:

Store at -20°C. Avoid freeze / thaw cycles. Buffer: PBS with 0.02% sodium azide, 50% glycerol, pH7.3.

Product Images



Western blot analysis of extracts of HeLa cells, using MSH2 antibody (CAB0064). Secondary antibody: HRP Goat Anti-Rabbit IgG (H+L) (CABS014) at 1:10000 dilution. Lysates/proteins: 25ug per lane. Blocking buffer: 3% nonfat dry milk in TBST.