

KAT2B Rabbit Polyclonal Antibody



CAB0066

Product Information

Size:

20uL, 50uL, 100uL, 200uL

Observed MW:

93kDa

Calculated MW:

93kDa

Applications:

WB IF

Reactivity:

Human, Mouse, Rat

Protein Background

CBP and p300 are large nuclear proteins that bind to many sequence-specific factors involved in cell growth and/or differentiation, including c-jun and the adenoviral oncoprotein E1A. The protein encoded by this gene associates with p300/CBP. It has in vitro and in vivo binding activity with CBP and p300, and competes with E1A for binding sites in p300/CBP. It has histone acetyl transferase activity with core histones and nucleosome core particles, indicating that this protein plays a direct role in transcriptional regulation.

Immunogen information

Gene ID:

8850

Uniprot

Q92831

Synonyms:

KAT2B; CAF; P/CAF; PCAF

Antibody Information

Recommended dilutions:

WB 1:500 - 1:2000 IF 1:50 - 1:200

Source:

Rabbit

Isotype:

IgG

Purification:

Affinity purification

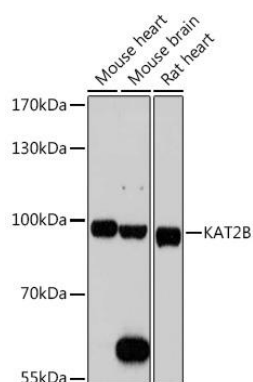
Immunogen:

Recombinant fusion protein containing a sequence corresponding to amino acids 583-832 of human KAT2B (NP_003875.3).

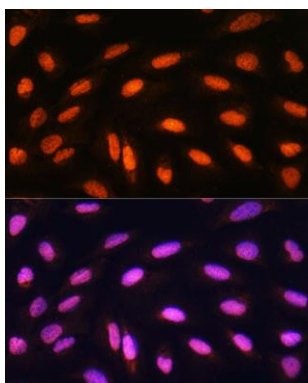
Storage:

Store at -20°C. Avoid freeze / thaw cycles. Buffer: PBS with 0.02% sodium azide, 50% glycerol, pH7.3.

Product Images



Western blot analysis of extracts of various cell lines, using KAT2B antibody (CAB0066) at 1:1000 dilution. Secondary antibody: HRP Goat Anti-Rabbit IgG (H+L) (CABS014) at 1:10000 dilution. Lysates/proteins: 25ug per lane. Blocking buffer: 3% nonfat dry milk in TBST. Detection: ECL Basic Kit (CABM00020). Exposure time: 90s.



Immunofluorescence analysis of U2OS cells using KAT2B Rabbit pAb (CAB0066) at dilution of 1:100. Blue: DAPI for nuclear staining.