

# MT1-MMP Rabbit Monoclonal Antibody



CAB0067

## Product Information

### Size:

20uL, 50uL, 100uL, 200uL

### Observed MW:

52KDa/60KDa

### Calculated MW:

65kDa

### Applications:

WB

### Reactivity:

Human, Mouse, Rat

## Antibody Information

### Recommended dilutions:

WB 1:500 - 1:2000

### Source:

Rabbit

### Isotype:

IgG

### Purification:

Affinity purification

## Protein Background

Proteins of the matrix metalloproteinase (MMP) family are involved in the breakdown of extracellular matrix in normal physiological processes, such as embryonic development, reproduction, and tissue remodeling, as well as in disease processes, such as arthritis and metastasis. Most MMP's are secreted as inactive proproteins which are activated when cleaved by extracellular proteinases. However, the protein encoded by this gene is a member of the membrane-type MMP (MT-MMP) subfamily; each member of this subfamily contains a potential transmembrane domain suggesting that these proteins are expressed at the cell surface rather than secreted. This protein activates MMP2 protein, and this activity may be involved in tumor invasion. [provided by RefSeq, Jul 2008]

## Immunogen information

### Gene ID:

4323

### Uniprot

P50281

### Synonyms:

MMP-14; MMP-X1; MT-MMP; MT-MMP 1; MT1-MMP; MT1MMP;  
MTMMP1; WNCHRS

### Immunogen:

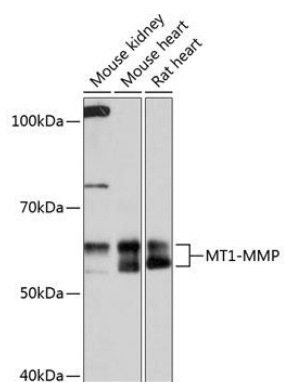
A synthesized peptide derived from human MT1-MMP

### Storage:

Store at -20°C. Avoid freeze / thaw cycles. Buffer: PBS with 0.02% sodium azide, 0.05% BSA, 50% glycerol, pH7.3.

## Product Images

---



Western blot - MT1-MMP Rabbit mAb (CAB0067)