

# LRP5 Rabbit Polyclonal Antibody



CAB0130

## Product Information

### Size:

20uL, 50uL, 100uL, 200uL

### Observed MW:

150kDa

### Calculated MW:

179kDa

### Applications:

WB IHC

### Reactivity:

Human, Mouse, Rat

## Antibody Information

### Recommended dilutions:

WB 1:500 - 1:2000 IHC 1:50  
- 1:200

### Source:

Rabbit

### Isotype:

IgG

### Purification:

Affinity purification

## Protein Background

This gene encodes a transmembrane low-density lipoprotein receptor that binds and internalizes ligands in the process of receptor-mediated endocytosis. This protein also acts as a co-receptor with Frizzled protein family members for transducing signals by Wnt proteins and was originally cloned on the basis of its association with type 1 diabetes mellitus in humans. This protein plays a key role in skeletal homeostasis and many bone density related diseases are caused by mutations in this gene. Mutations in this gene also cause familial exudative vitreoretinopathy. Alternative splicing results in multiple transcript variants.

## Immunogen information

### Gene ID:

4041

### Uniprot

O75197

### Synonyms:

LRP5; BMND1; EVR1; EVR4; HBM; LR3; LRP-5; LRP7; OPPG; OPS;  
OPTA1; VBCH2

### Immunogen:

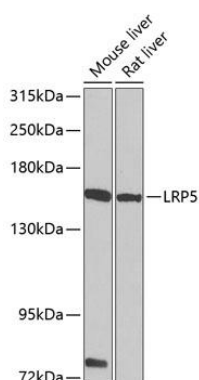
Recombinant fusion protein containing a sequence corresponding to amino acids 1000-1250 of human LRP5 (NP\_002326.2).

### Storage:

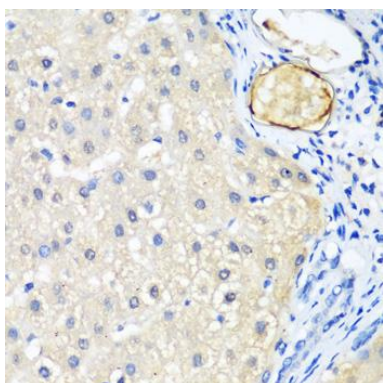
Store at -20°C. Avoid freeze / thaw cycles. Buffer: PBS with 0.02% sodium azide, 50% glycerol, pH7.3.

## Product Images

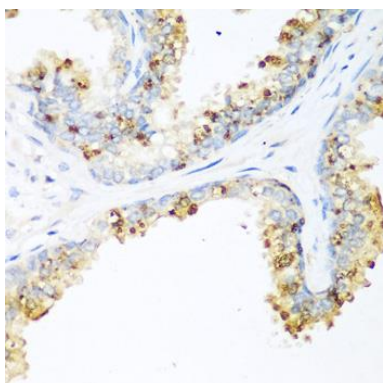
---



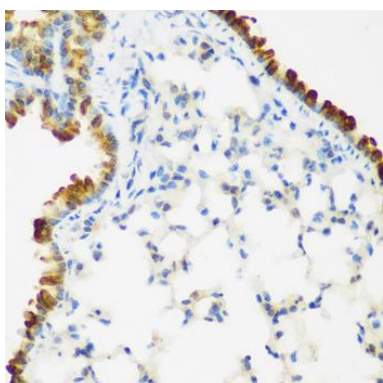
Western blot analysis of extracts of various cell lines, using LRP5 antibody (CAB0130) at 1:1000 dilution. Secondary antibody: HRP Goat Anti-Rabbit IgG (H+L) (CABS014) at 1:10000 dilution. Lysates/proteins: 25ug per lane. Blocking buffer: 3% nonfat dry milk in TBST. Detection: ECL Basic Kit (CABM00020). Exposure time: 90s.



Immunohistochemistry of paraffin-embedded human liver using LRP5 antibody (CAB0130) at dilution of 1:200 (40x lens).



Immunohistochemistry of paraffin-embedded human prostate using LRP5 antibody (CAB0130) at dilution of 1:200 (40x lens).



Immunohistochemistry of paraffin-embedded mouse lung using LRP5 antibody (CAB0130) at dilution of 1:200 (40x lens).