

ALDH1A1 Rabbit Monoclonal Antibody



CAB0157

Product Information

Size:

20uL, 50uL, 100uL, 200uL

Observed MW:

55KDa

Calculated MW:

55kDa

Applications:

WB IF

Reactivity:

Human, Mouse, Rat

Antibody Information

Recommended dilutions:

WB 1:500 - 1:2000 IF 1:50 - 1:200

Source:

Rabbit

Isotype:

IgG

Purification:

Affinity purification

Protein Background

The protein encoded by this gene belongs to the aldehyde dehydrogenase family. Aldehyde dehydrogenase is the next enzyme after alcohol dehydrogenase in the major pathway of alcohol metabolism. There are two major aldehyde dehydrogenase isozymes in the liver, cytosolic and mitochondrial, which are encoded by distinct genes, and can be distinguished by their electrophoretic mobility, kinetic properties, and subcellular localization. This gene encodes the cytosolic isozyme. Studies in mice show that through its role in retinol metabolism, this gene may also be involved in the regulation of the metabolic responses to high-fat diet. [provided by RefSeq, Mar 2011]

Immunogen information

Gene ID:

216

Uniprot

P00352

Synonyms:

ALDC; ALDH-E1; ALDH1; ALDH11; HEL-9; HEL-S-53e; HEL12; PUMB1; RALDH1

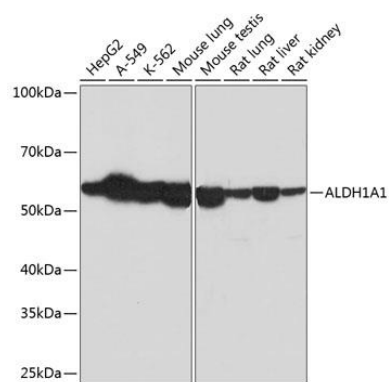
Immunogen:

A synthesized peptide derived from human ALDH1A1

Storage:

Store at -20°C. Avoid freeze / thaw cycles. Buffer: PBS with 0.02% sodium azide, 0.05% BSA, 50% glycerol, pH7.3.

Product Images



Western blot - ALDH1A1 Rabbit mAb (CAB0157)