

SPTAN1 Rabbit Polyclonal Antibody



CAB0160

Product Information

Size:

20uL, 50uL, 100uL, 200uL

Observed MW:

285kDa

Calculated MW:

282kDa/284kDa/285kDa

Applications:

WB IHC IF

Reactivity:

Human, Mouse, Rat

Protein Background

Spectrins are a family of filamentous cytoskeletal proteins that function as essential scaffold proteins that stabilize the plasma membrane and organize intracellular organelles. Spectrins are composed of alpha and beta dimers that associate to form tetramers linked in a head-to-head arrangement. This gene encodes an alpha spectrin that is specifically expressed in nonerythrocytic cells. The encoded protein has been implicated in other cellular functions including DNA repair and cell cycle regulation. Mutations in this gene are the cause of early infantile epileptic encephalopathy-5. Alternate splicing results in multiple transcript variants.

Immunogen information

Gene ID:

6709

Uniprot

Q13813

Synonyms:

SPTAN1; EIEE5; NEAS; SPTA2

Antibody Information

Recommended dilutions:

WB 1:500 - 1:2000 IHC 1:50
- 1:200 IF 1:50 - 1:200

Source:

Rabbit

Isotype:

IgG

Purification:

Affinity purification

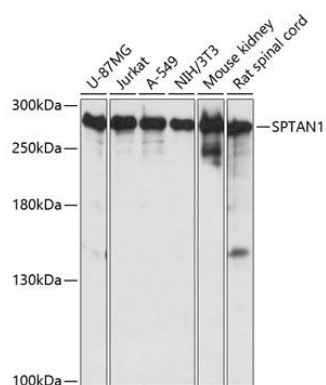
Immunogen:

Recombinant fusion protein containing a sequence corresponding to amino acids 950-1130 of human SPTAN1 (NP_001123910.1).

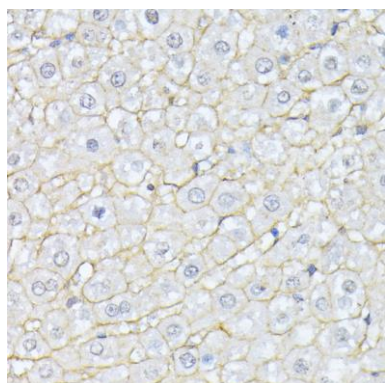
Storage:

Store at -20°C. Avoid freeze / thaw cycles. Buffer: PBS with 0.02% sodium azide, 50% glycerol, pH7.3.

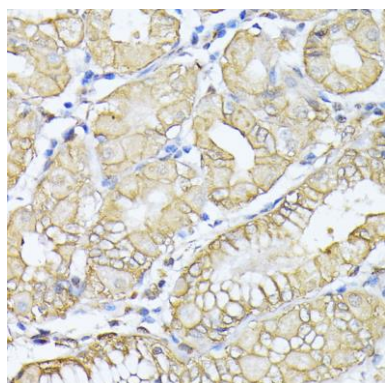
Product Images



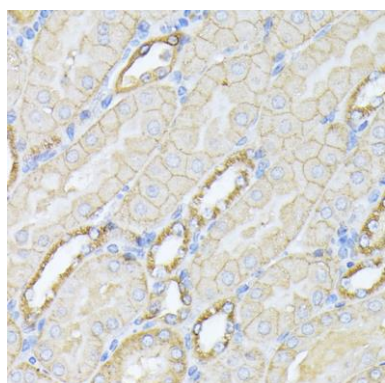
Western blot analysis of extracts of various cell lines, using SPTAN1 antibody (CAB0160) at 1:3000 dilution. Secondary antibody: HRP Goat Anti-Rabbit IgG (H+L) (CABS014) at 1:10000 dilution. Lysates/proteins: 25ug per lane. Blocking buffer: 3% nonfat dry milk in TBST. Detection: ECL Basic Kit (CABM00020). Exposure time: 1s.



Immunohistochemistry of paraffin-embedded rat liver using SPTAN1 antibody (CAB0160) at dilution of 1:100 (40x lens).



Immunohistochemistry of paraffin-embedded human stomach using SPTAN1 antibody (CAB0160) at dilution of 1:100 (40x lens).



Immunohistochemistry of paraffin-embedded mouse kidney using SPTAN1 antibody (CAB0160) at dilution of 1:100 (40x lens).