

Caspase-10 Rabbit Polyclonal Antibody



CAB0169

Product Information

Size:

20uL, 50uL, 100uL, 200uL

Observed MW:

Refer to figures

Calculated MW:

28kDa/31kDa/51kDa/54kDa/
58kDa

Applications:

IF

Reactivity:

Human, Mouse, Rat

Antibody Information

Recommended dilutions:

IF 1:50 - 1:200

Source:

Rabbit

Isotype:

IgG

Purification:

Affinity purification

Protein Background

This gene encodes a protein which is a member of the cysteine-aspartic acid protease (caspase) family. Sequential activation of caspases plays a central role in the execution-phase of cell apoptosis. Caspases exist as inactive proenzymes which undergo proteolytic processing at conserved aspartic residues to produce two subunits, large and small, that dimerize to form the active enzyme. This protein cleaves and activates caspases 3 and 7, and the protein itself is processed by caspase 8. Mutations in this gene are associated with type IIA autoimmune lymphoproliferative syndrome, non-Hodgkin lymphoma and gastric cancer. Alternatively spliced transcript variants encoding different isoforms have been described for this gene.

Immunogen information

Gene ID:

843

Uniprot

Q92851

Synonyms:

CASP10; ALPS2; FLICE2; MCH4; caspase-10

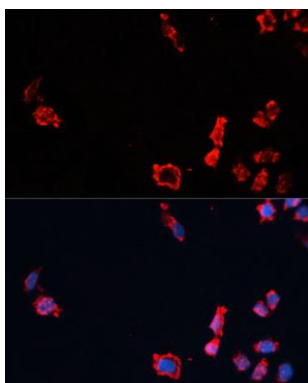
Immunogen:

Recombinant fusion protein containing a sequence corresponding to amino acids 230-505 of human Caspase-10 (NP_116759.2).

Storage:

Store at -20°C. Avoid freeze / thaw cycles. Buffer: PBS with 0.02% sodium azide, 50% glycerol, pH7.3.

Product Images



Immunofluorescence analysis of HeLa cells using Caspase-10 Polyclonal Antibody (CAB0169) at dilution of 1:100 (40x lens). Blue: DAPI for nuclear staining.