

ARRB1 Rabbit Polyclonal Antibody



CAB0190

Product Information

Size:

20uL, 50uL, 100uL, 200uL

Observed MW:

43-54kDa

Calculated MW:

46kDa/47kDa

Applications:

WB IHC IF

Reactivity:

Human, Mouse, Rat

Antibody Information

Recommended dilutions:

WB 1:500 - 1:2000 IHC 1:50
- 1:200 IF 1:50 - 1:200

Source:

Rabbit

Isotype:

IgG

Purification:

Affinity purification

Protein Background

Members of arrestin/beta-arrestin protein family are thought to participate in agonist-mediated desensitization of G-protein-coupled receptors and cause specific dampening of cellular responses to stimuli such as hormones, neurotransmitters, or sensory signals. Arrestin beta 1 is a cytosolic protein and acts as a cofactor in the beta-adrenergic receptor kinase (BARK) mediated desensitization of beta-adrenergic receptors. Besides the central nervous system, it is expressed at high levels in peripheral blood leukocytes, and thus the BARK/beta-arrestin system is believed to play a major role in regulating receptor-mediated immune functions. Alternatively spliced transcripts encoding different isoforms of arrestin beta 1 have been described.

Immunogen information

Gene ID:

408

Uniprot

P49407

Synonyms:

ARRB1; ARB1; ARR1

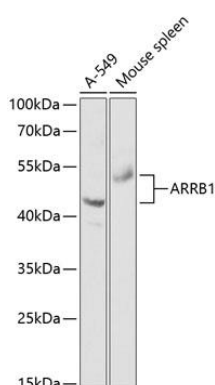
Immunogen:

Recombinant fusion protein containing a sequence corresponding to amino acids 169-418 of human ARRB1 (NP_004032.2).

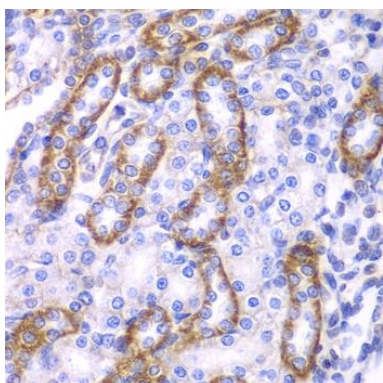
Storage:

Store at -20°C. Avoid freeze / thaw cycles. Buffer: PBS with 0.02% sodium azide, 50% glycerol, pH7.3.

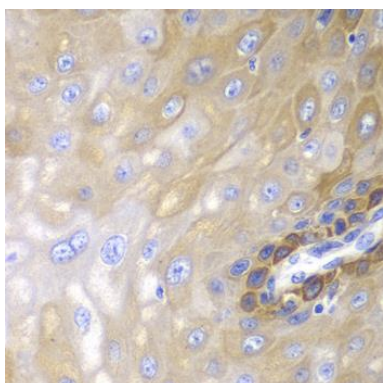
Product Images



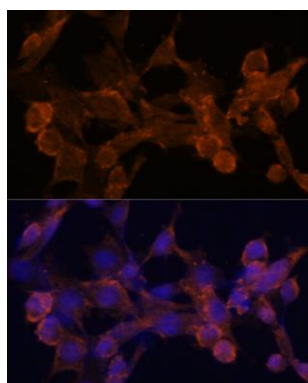
Western blot analysis of extracts of various cell lines, using ARRBB1 antibody (CAB0190) at 1:1000 dilution. Secondary antibody: HRP Goat Anti-Rabbit IgG (H+L) (CABS014) at 1:10000 dilution. Lysates/proteins: 25ug per lane. Blocking buffer: 3% nonfat dry milk in TBST.



Immunohistochemistry of paraffin-embedded rat kidney using ARRBB1 antibody (CAB0190) at dilution of 1:100 (40x lens).



Immunohistochemistry of paraffin-embedded human esophagus using ARRBB1 antibody (CAB0190) at dilution of 1:100 (40x lens).



Immunofluorescence analysis of NIH/3T3 cells using ARRBB1 antibody (CAB0190) at dilution of 1:100. Blue: DAPI for nuclear staining.