

# ATG5 Rabbit Polyclonal Antibody



CAB0203

## Product Information

### Size:

20uL, 50uL, 100uL, 200uL

### Observed MW:

55kDa

### Calculated MW:

22kDa/32kDa

### Applications:

WB IHC IF

### Reactivity:

Human, Mouse, Rat

## Protein Background

The protein encoded by this gene, in combination with autophagy protein 12, functions as an E1-like activating enzyme in a ubiquitin-like conjugating system. The encoded protein is involved in several cellular processes, including autophagic vesicle formation, mitochondrial quality control after oxidative damage, negative regulation of the innate antiviral immune response, lymphocyte development and proliferation, MHC II antigen presentation, adipocyte differentiation, and apoptosis. Several transcript variants encoding different protein isoforms have been found for this gene.

## Immunogen information

### Gene ID:

9474

### Uniprot

Q9H1Y0

### Synonyms:

ATG5; APG5; APG5-LIKE; APG5L; ASP; hAPG5

## Antibody Information

### Recommended dilutions:

WB 1:500 - 1:2000 IHC 1:50  
- 1:200 IF 1:50 - 1:200

### Source:

Rabbit

### Isotype:

IgG

### Purification:

Affinity purification

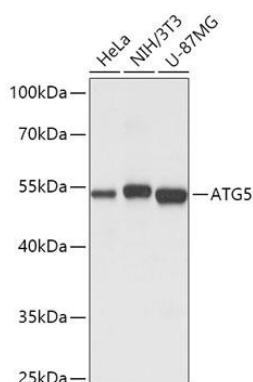
### Immunogen:

Recombinant fusion protein containing a sequence corresponding to amino acids 1-275 of human ATG5 (NP\_004840.1).

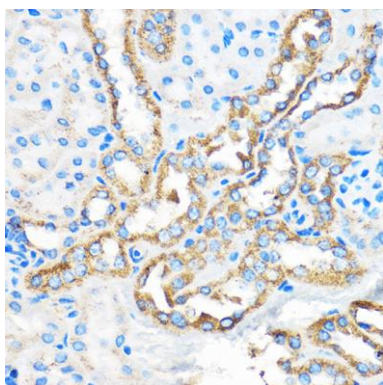
### Storage:

Store at -20°C. Avoid freeze / thaw cycles. Buffer: PBS with 0.02% sodium azide, 50% glycerol, pH7.3.

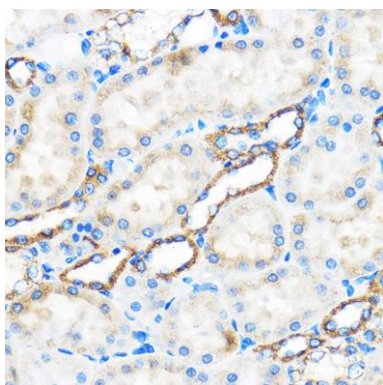
## Product Images



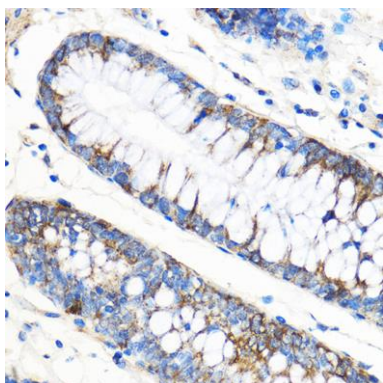
Western blot analysis of extracts of various cell lines, using ATG5 antibody (CAB0203) at 1:1000 dilution. Secondary antibody: HRP Goat Anti-Rabbit IgG (H+L) (CABS014) at 1:10000 dilution. Lysates/proteins: 25ug per lane. Blocking buffer: 3% nonfat dry milk in TBST. Detection: ECL Basic Kit (CABM00020). Exposure time: 5s.



Immunohistochemistry of paraffin-embedded Mouse kidney using ATG5 Rabbit pAb (CAB0203) at dilution of 1:50 (40x lens).



Immunohistochemistry of paraffin-embedded Rat kidney using ATG5 Rabbit pAb (CAB0203) at dilution of 1:50 (40x lens).



Immunohistochemistry of paraffin-embedded Human colon using ATG5 Rabbit pAb (CAB0203) at dilution of 1:50 (40x lens).