

Bcl-2 Rabbit Polyclonal Antibody



CAB0208

Product Information

Size:

20uL, 50uL, 100uL, 200uL

Observed MW:

26kDa

Calculated MW:

22kDa/26kDa

Applications:

WB IHC IF IP

Reactivity:

Human, Mouse, Rat

Protein Background

This gene encodes an integral outer mitochondrial membrane protein that blocks the apoptotic death of some cells such as lymphocytes. Constitutive expression of BCL2, such as in the case of translocation of BCL2 to Ig heavy chain locus, is thought to be the cause of follicular lymphoma. Alternative splicing results in multiple transcript variants.

Immunogen information

Gene ID:

596

Uniprot

P10415

Synonyms:

Bcl-2; PPP1R50; BCL2

Antibody Information

Recommended dilutions:

WB 1:500 - 1:2000 IHC 1:50

- 1:100 IF 1:50 - 1:100 IP

1:50 - 1:200

Source:

Rabbit

Immunogen:

A synthetic peptide of human Bcl-2

Storage:

Store at -20°C. Avoid freeze / thaw cycles. Buffer: PBS with 0.02% sodium azide, 50% glycerol, pH7.3.

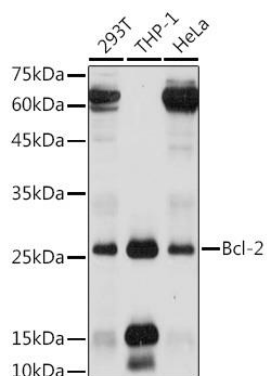
Isotype:

IgG

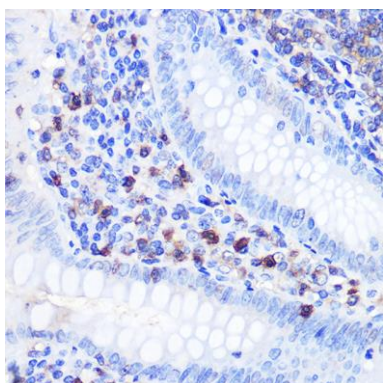
Purification:

Affinity purification

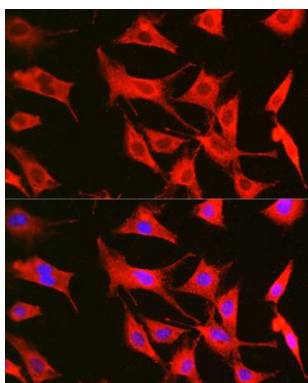
Product Images



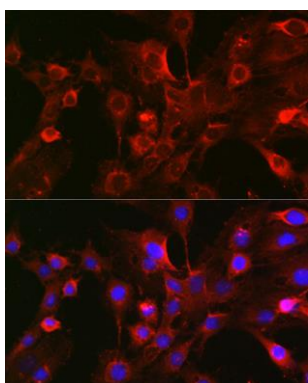
Western blot analysis of extracts of various cell lines, using Bcl-2 antibody (CAB0208) at 1:500 dilution. Secondary antibody: HRP Goat Anti-Rabbit IgG (H+L) (CABS014) at 1:10000 dilution. Lysates/proteins: 25ug per lane. Blocking buffer: 3% nonfat dry milk in TBST. Detection: ECL Basic Kit (CABM00020). Exposure time: 30s.



Immunohistochemistry of paraffin-embedded human appendix using Bcl-2 Rabbit pAb (CAB0208) at dilution of 1:100 (40x lens).



Immunofluorescence analysis of BALB-3T3 cells using Bcl-2 Rabbit pAb (CAB0208) at dilution of 1:100 (40x lens). Blue: DAPI for nuclear staining.



Immunofluorescence analysis of C6 cells using Bcl-2 Rabbit pAb (CAB0208) at dilution of 1:100 (40x lens). Blue: DAPI for nuclear staining.