

BMI1 Rabbit Polyclonal Antibody



CAB0211

Product Information

Size:

20uL, 50uL, 100uL, 200uL

Observed MW:

43kDa

Calculated MW:

36kDa

Applications:

WB IP

Reactivity:

Human, Mouse, Rat

Antibody Information

Recommended dilutions:

WB 1:500 - 1:2000 IP 1:50 - 1:100

Source:

Rabbit

Isotype:

IgG

Purification:

Affinity purification

Protein Background

This gene encodes a ring finger protein that is major component of the polycomb group complex 1 (PRC1). This complex functions through chromatin remodeling as an essential epigenetic repressor of multiple regulatory genes involved in embryonic development and self-renewal in somatic stem cells. This protein also plays a central role in DNA damage repair. This gene is an oncogene and aberrant expression is associated with numerous cancers and is associated with resistance to certain chemotherapies. A pseudogene of this gene is found on chromosome X. Read-through transcription also exists between this gene and the upstream COMM domain containing 3 (COMMD3) gene.

Immunogen information

Gene ID:

648

Uniprot

P35226

Synonyms:

BMI1; FLVI2/BMI1; PCGF4; RNF51; flvi-2/bmi-1; Bmi1

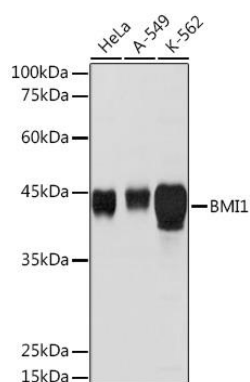
Immunogen:

Recombinant fusion protein containing a sequence corresponding to amino acids 120-326 of human BMI1 (NP_005171.4).

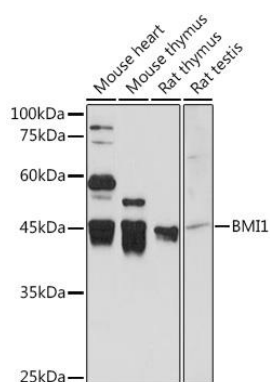
Storage:

Store at -20°C. Avoid freeze / thaw cycles. Buffer: PBS with 0.02% sodium azide, 50% glycerol, pH7.3.

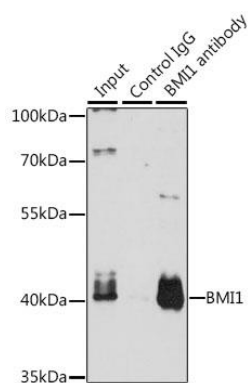
Product Images



Western blot analysis of extracts of various cell lines, using BMI1 Rabbit pAb (CAB0211) at 1:5000 dilution. Secondary antibody: HRP Goat Anti-Rabbit IgG (H+L) (CABS014) at 1:10000 dilution. Lysates/proteins: 25ug per lane. Blocking buffer: 3% nonfat dry milk in TBST. Detection: ECL Basic Kit (CABM00020). Exposure time: 10s.



Western blot analysis of extracts of various cell lines, using BMI1 Rabbit pAb (CAB0211) at 1:5000 dilution. Secondary antibody: HRP Goat Anti-Rabbit IgG (H+L) (CABS014) at 1:10000 dilution. Lysates/proteins: 25ug per lane. Blocking buffer: 3% nonfat dry milk in TBST. Detection: ECL Basic Kit (CABM00020). Exposure time: 90s.



Immunoprecipitation analysis of 200ug extracts of K-562 cells, using 3 ug BMI1 antibody (CAB0211). Western blot was performed from the immunoprecipitate using BMI1 antibody (CAB0211) at a dilution of 1:1000.