

Caspase-8 Rabbit Polyclonal Antibody



CAB0215

Product Information

Size:

20uL, 50uL, 100uL, 200uL

Observed MW:

17kDa/44kDa/60kDa

Calculated MW:

25-32kDa/45- 61kDa

Applications:

WB IHC IF

Reactivity:

Human, Mouse, Rat

Antibody Information

Recommended dilutions:

WB 1:500 - 1:2000 IHC 1:50
- 1:200 IF 1:50 - 1:200

Source:

Rabbit

Isotype:

IgG

Purification:

Affinity purification

Protein Background

This gene encodes a member of the cysteine-aspartic acid protease (caspase) family. Sequential activation of caspases plays a central role in the execution-phase of cell apoptosis. Caspases exist as inactive proenzymes composed of a prodomain, a large protease subunit, and a small protease subunit. Activation of caspases requires proteolytic processing at conserved internal aspartic residues to generate a heterodimeric enzyme consisting of the large and small subunits. This protein is involved in the programmed cell death induced by Fas and various apoptotic stimuli. The N-terminal FADD-like death effector domain of this protein suggests that it may interact with Fas-interacting protein FADD. This protein was detected in the insoluble fraction of the affected brain region from Huntington disease patients but not in those from normal controls, which implicated the role in neurodegenerative diseases. Many alternatively spliced transcript variants encoding different isoforms have been described, although not all variants have had their full-length sequences determined.

Immunogen information

Gene ID:

841

Uniprot

Q14790

Synonyms:

ALPS2B; CAP4; Casp-8; FLICE; MACH; MCH5; Caspase 8; CASP8;
Caspase-8; caspase-8

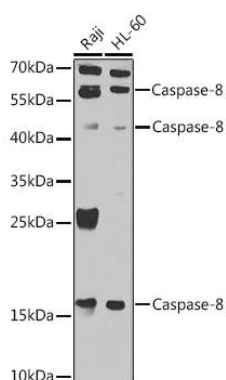
Immunogen:

Recombinant fusion protein containing a sequence corresponding to amino acids 1-479 of human Caspase-8 (NP_001073593.1).

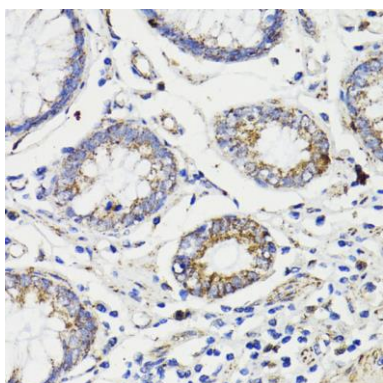
Storage:

Store at -20°C. Avoid freeze / thaw cycles. Buffer: PBS with 0.02% sodium azide, 50% glycerol, pH7.3.

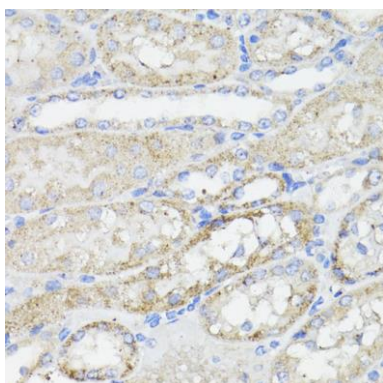
Product Images



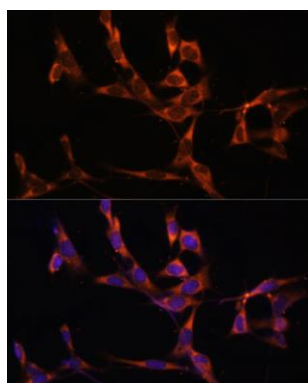
Western blot analysis of extracts of various cell lines, using Caspase-8 antibody (CAB0215) at 1:1000 dilution. Secondary antibody: HRP Goat Anti-Rabbit IgG (H+L) (CABS014) at 1:10000 dilution. Lysates/proteins: 25ug per lane. Blocking buffer: 3% nonfat dry milk in TBST. Detection: ECL Enhanced Kit (CABM00021). Exposure time: 30s.



Immunohistochemistry of paraffin-embedded human colon carcinoma using Caspase-8 antibody (CAB0215) at dilution of 1:200 (40x lens).



Immunohistochemistry of paraffin-embedded mouse kidney using Caspase-8 antibody (CAB0215) at dilution of 1:200 (40x lens).



Immunofluorescence analysis of NIH/3T3 cells using Caspase-8 antibody (CAB0215) at dilution of 1:100. Blue: DAPI for nuclear staining.