

# Caspase-10 Rabbit Polyclonal Antibody



CAB0216

## Product Information

### Size:

20uL, 50uL, 100uL, 200uL

### Observed MW:

72kDa

### Calculated MW:

28kDa/31kDa/51kDa/54kDa/  
58kDa

### Applications:

WB

### Reactivity:

Human, Mouse

## Antibody Information

### Recommended dilutions:

WB 1:500 - 1:2000

### Source:

Rabbit

### Isotype:

IgG

### Purification:

Affinity purification

## Protein Background

This gene encodes a protein which is a member of the cysteine-aspartic acid protease (caspase) family. Sequential activation of caspases plays a central role in the execution-phase of cell apoptosis. Caspases exist as inactive proenzymes which undergo proteolytic processing at conserved aspartic residues to produce two subunits, large and small, that dimerize to form the active enzyme. This protein cleaves and activates caspases 3 and 7, and the protein itself is processed by caspase 8. Mutations in this gene are associated with type IIA autoimmune lymphoproliferative syndrome, non-Hodgkin lymphoma and gastric cancer. Alternatively spliced transcript variants encoding different isoforms have been described for this gene.

## Immunogen information

### Gene ID:

843

### Uniprot

Q92851

### Synonyms:

CASP10; ALPS2; FLICE2; MCH4; caspase-10

### Immunogen:

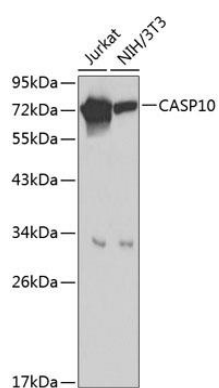
Recombinant fusion protein containing a sequence corresponding to amino acids 220-521 of human Caspase-10 (NP\_116759.2).

### Storage:

Store at -20°C. Avoid freeze / thaw cycles. Buffer: PBS with 0.02% sodium azide, 50% glycerol, pH7.3.

## Product Images

---



Western blot analysis of extracts of various cell lines, using Caspase-10 antibody (CAB0216). Secondary antibody: HRP Goat Anti-Rabbit IgG (H+L) (CABS014) at 1:10000 dilution. Lysates/proteins: 25ug per lane. Blocking buffer: 3% nonfat dry milk in TBST.