

# CD133 Rabbit Polyclonal Antibody



CAB0219

---

## Product Information

### Size:

20uL, 50uL, 100uL, 200uL

### Observed MW:

97kDa/125kDa

### Calculated MW:

92kDa/93kDa/94kDa/96kDa/  
97kDa

### Applications:

WB IHC IF IP

### Reactivity:

Human, Mouse, Rat

## Antibody Information

### Recommended dilutions:

WB 1:500 - 1:2000 IHC 1:50  
- 1:200 IF 1:50 - 1:200 IP  
1:50 - 1:200

### Source:

Rabbit

### Isotype:

IgG

### Purification:

Affinity purification

## Protein Background

This gene encodes a pentaspan transmembrane glycoprotein. The protein localizes to membrane protrusions and is often expressed on adult stem cells, where it is thought to function in maintaining stem cell properties by suppressing differentiation. Mutations in this gene have been shown to result in retinitis pigmentosa and Stargardt disease. Expression of this gene is also associated with several types of cancer. This gene is expressed from at least five alternative promoters that are expressed in a tissue-dependent manner. Multiple transcript variants encoding different isoforms have been found for this gene.

## Immunogen information

### Gene ID:

8842

### Uniprot

O43490

### Synonyms:

PROM1; AC133; CD133; CORD12; MCDR2; MSTP061; PROML1;  
RP41; STGD4

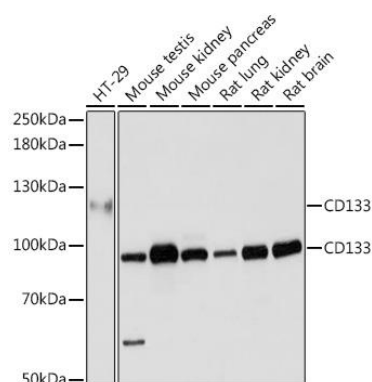
### Immunogen:

Recombinant fusion protein containing a sequence corresponding to amino acids 170-430 of human CD133 (NP\_001139320.1).

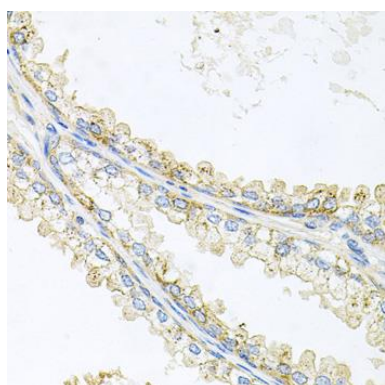
### Storage:

Store at -20°C. Avoid freeze / thaw cycles. Buffer: PBS with 0.02% sodium azide, 50% glycerol, pH7.3.

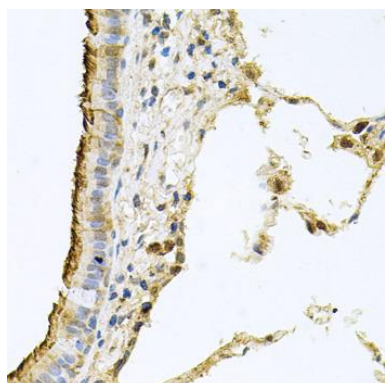
## Product Images



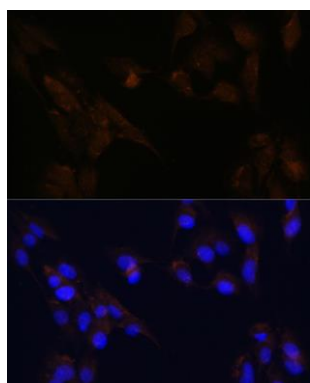
Western blot analysis of extracts of various cell lines, using CD133 antibody (CAB0219) at 1:1000 dilution. Secondary antibody: HRP Goat Anti-Rabbit IgG (H+L) (CABS014) at 1:10000 dilution. Lysates/proteins: 25ug per lane. Blocking buffer: 3% nonfat dry milk in TBST. Detection: ECL Basic Kit (CABM00020). Exposure time: 1s.



Immunohistochemistry of paraffin-embedded human prostate using CD133 antibody (CAB0219) at dilution of 1:100 (40x lens).



Immunohistochemistry of paraffin-embedded human lung using CD133 antibody (CAB0219) at dilution of 1:100 (40x lens).



Immunofluorescence analysis of C6 cells using CD133 antibody (CAB0219) at dilution of 1:100. Blue: DAPI for nuclear staining.