

DDIT3 / CHOP Rabbit Polyclonal Antibody



CAB0221

Product Information

Size:

20uL, 50uL, 100uL, 200uL

Observed MW:

25kDa

Calculated MW:

19kDa/21kDa

Applications:

WB IHC IF

Reactivity:

Human, Mouse, Rat

Antibody Information

Recommended dilutions:

WB 1:500 - 1:2000 IHC 1:50
- 1:200 IF 1:50 - 1:200

Source:

Rabbit

Isotype:

IgG

Purification:

Affinity purification

Protein Background

This gene encodes a member of the CCAAT/enhancer-binding protein (C/EBP) family of transcription factors. The protein functions as a dominant-negative inhibitor by forming heterodimers with other C/EBP members, such as C/EBP and LAP (liver activator protein), and preventing their DNA binding activity. The protein is implicated in adipogenesis and erythropoiesis, is activated by endoplasmic reticulum stress, and promotes apoptosis. Fusion of this gene and FUS on chromosome 16 or EWSR1 on chromosome 22 induced by translocation generates chimeric proteins in myxoid liposarcomas or Ewing sarcoma. Multiple alternatively spliced transcript variants encoding two isoforms with different length have been identified.

Immunogen information

Gene ID:

1649

Uniprot

P35638

Synonyms:

DDIT3; CEBPZ; CHOP; CHOP-10; CHOP10; GADD153; C/EBPzeta;
DDIT3 / CHOP

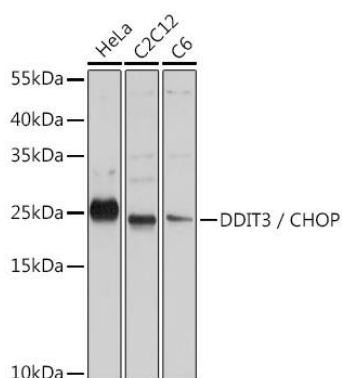
Immunogen:

A synthetic peptide corresponding to a sequence within amino acids 100 to the C-terminus of human DDIT3 / CHOP (NP_004074.2).

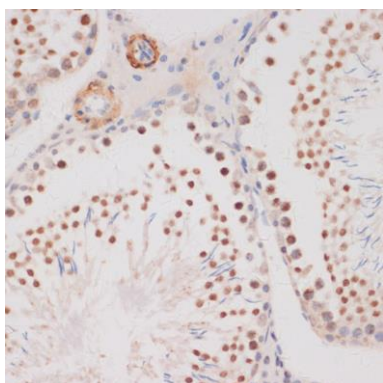
Storage:

Store at -20°C. Avoid freeze / thaw cycles. Buffer: PBS with 0.02% sodium azide, 50% glycerol, pH7.3.

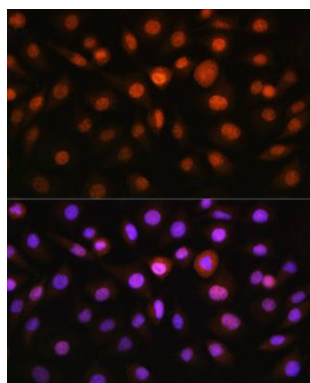
Product Images



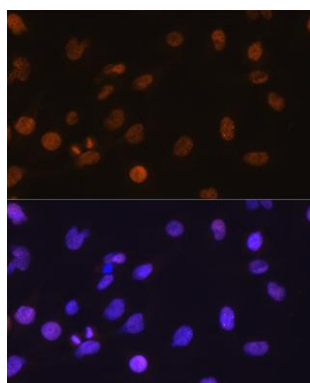
Western blot analysis of extracts of various cell lines, using DDIT3 / CHOP antibody (CAB0221) at 1:1000 dilution. Secondary antibody: HRP Goat Anti-Rabbit IgG (H+L) (CABS014) at 1:10000 dilution. Lysates/proteins: 25ug per lane. Blocking buffer: 3% nonfat dry milk in TBST. Detection: ECL Basic Kit (CABM00020). Exposure time: 10s.



Immunohistochemistry of paraffin-embedded rat testis using DDIT3 / CHOP antibody (CAB0221) at dilution of 1:100 (40x lens).



Immunofluorescence analysis of L929 cells using DDIT3 / CHOP antibody (CAB0221) at dilution of 1:100. Blue: DAPI for nuclear staining.



Immunofluorescence analysis of C6 cells using DDIT3 / CHOP antibody (CAB0221) at dilution of 1:100. Blue: DAPI for nuclear staining.