

DOK4 Rabbit Polyclonal Antibody



CAB0226

Product Information

Size:

20uL, 50uL, 100uL, 200uL

Observed MW:

37kDa

Calculated MW:

37kDa

Applications:

WB IHC IF

Reactivity:

Human, Mouse, Rat

Protein Background

DOK proteins are enzymatically inert adaptor or scaffolding proteins. They provide a docking platform for the assembly of multimolecular signaling complexes. DOK4 functions in RET-mediated neurite outgrowth and plays a positive role in activation of the MAP kinase pathway (By similarity). Putative link with downstream effectors of RET in neuronal differentiation. May be involved in the regulation of the immune response induced by T-cells.

Immunogen information

Gene ID:

55715

Uniprot

Q8TEW6

Synonyms:

DOK4; IRS-5; IRS5

Antibody Information

Recommended dilutions:

WB 1:500 - 1:2000 IHC 1:50
- 1:200 IF 1:50 - 1:200

Source:

Rabbit

Isotype:

IgG

Purification:

Affinity purification

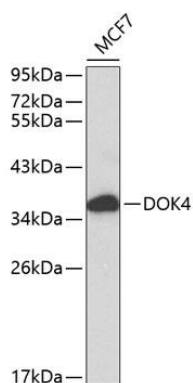
Immunogen:

Recombinant fusion protein containing a sequence corresponding to amino acids 240-326 of human DOK4 (NP_060580.2).

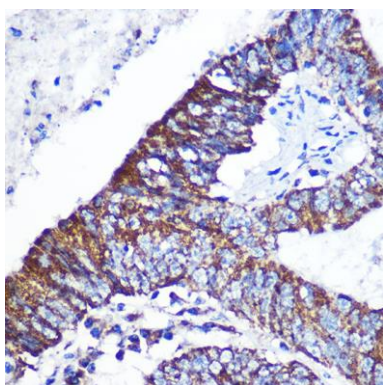
Storage:

Store at -20°C. Avoid freeze / thaw cycles. Buffer: PBS with 0.02% sodium azide, 50% glycerol, pH7.3.

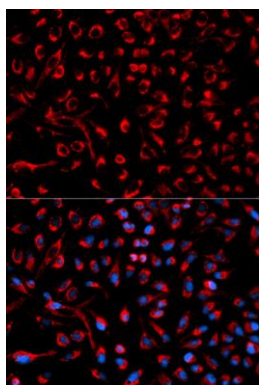
Product Images



Western blot analysis of extracts of MCF-7 cells, using DOK4 antibody (CAB0226) at 1:1000 dilution. Secondary antibody: HRP Goat Anti-Rabbit IgG (H+L) (CABS014) at 1:10000 dilution. Lysates/proteins: 25ug per lane. Blocking buffer: 3% nonfat dry milk in TBST.



Immunohistochemistry of paraffin-embedded Human colon carcinoma using DOK4 Rabbit pAb (CAB0226) at dilution of 1:100 (40x lens).



Immunofluorescence analysis of HeLa cells using DOK4 antibody (CAB0226). Blue: DAPI for nuclear staining.