

FGF2 Rabbit Polyclonal Antibody



CAB0235

Product Information

Size:

20uL, 50uL, 100uL, 200uL

Observed MW:

20kDa

Calculated MW:

17kDa/21kDa/22kDa/30kDa

Applications:

WB IHC IF

Reactivity:

Human, Mouse, Rat

Antibody Information

Recommended dilutions:

WB 1:500 - 1:2000 IHC 1:50
- 1:200 IF 1:50 - 1:200

Source:

Rabbit

Isotype:

IgG

Purification:

Affinity purification

Protein Background

The protein encoded by this gene is a member of the fibroblast growth factor (FGF) family. FGF family members bind heparin and possess broad mitogenic and angiogenic activities. This protein has been implicated in diverse biological processes, such as limb and nervous system development, wound healing, and tumor growth. The mRNA for this gene contains multiple polyadenylation sites, and is alternatively translated from non-AUG (CUG) and AUG initiation codons, resulting in five different isoforms with distinct properties. The CUG-initiated isoforms are localized in the nucleus and are responsible for the intracrine effect, whereas, the AUG-initiated form is mostly cytosolic and is responsible for the paracrine and autocrine effects of this FGF.

Immunogen information

Gene ID:

2247

Uniprot

P09038

Synonyms:

BFGF; FGF-2; FGFB; HBGF-2; Basic FGF; FGF2

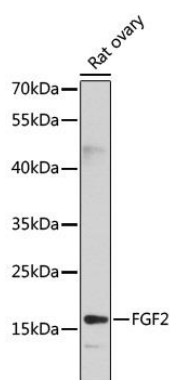
Immunogen:

Recombinant fusion protein containing a sequence corresponding to amino acids 143-288 of human FGF2 (NP_001997.5).

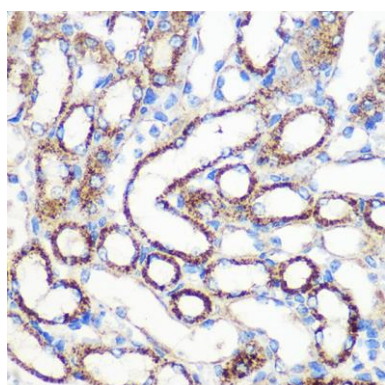
Storage:

Store at -20°C. Avoid freeze / thaw cycles. Buffer: PBS with 0.02% sodium azide, 50% glycerol, pH7.3.

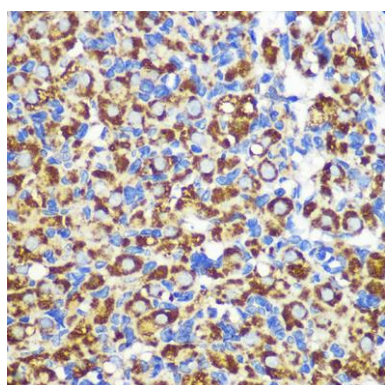
Product Images



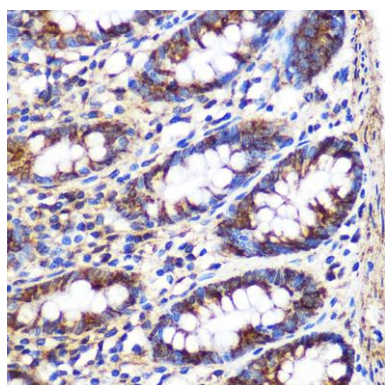
Western blot analysis of extracts of rat ovary, using FGF2 antibody (CAB0235) at 1:1000 dilution. Secondary antibody: HRP Goat Anti-Rabbit IgG (H+L) (CABS014) at 1:10000 dilution. Lysates/proteins: 25ug per lane. Blocking buffer: 3% nonfat dry milk in TBST. Detection: ECL Basic Kit (CABM00020). Exposure time: 30s.



Immunohistochemistry of paraffin-embedded Mouse kidney using FGF2 Rabbit pAb (CAB0235) at dilution of 1:100 (40x lens).



Immunohistochemistry of paraffin-embedded Rat ovary using FGF2 Rabbit pAb (CAB0235) at dilution of 1:100 (40x lens).



Immunohistochemistry of paraffin-embedded Human colon using FGF2 Rabbit pAb (CAB0235) at dilution of 1:100 (40x lens).