

# c-Fos Rabbit Polyclonal Antibody



CAB0236

---

## Product Information

### Size:

20uL, 50uL, 100uL, 200uL

### Observed MW:

62kDa

### Calculated MW:

28kDa/36kDa/40kDa

### Applications:

WB IHC IF

### Reactivity:

Human, Mouse, Rat

## Protein Background

The Fos gene family consists of 4 members: FOS, FOSB, FOSL1, and FOSL2. These genes encode leucine zipper proteins that can dimerize with proteins of the JUN family, thereby forming the transcription factor complex AP-1. As such, the FOS proteins have been implicated as regulators of cell proliferation, differentiation, and transformation. In some cases, expression of the FOS gene has also been associated with apoptotic cell death.

## Immunogen information

### Gene ID:

2353

### Uniprot

P01100

### Synonyms:

FOS; AP-1; C-FOS; p55; c-Fos

## Antibody Information

### Recommended dilutions:

WB 1:500 - 1:2000 IHC 1:50  
- 1:200 IF 1:50 - 1:200

### Source:

Rabbit

### Isotype:

IgG

### Purification:

Affinity purification

### Immunogen:

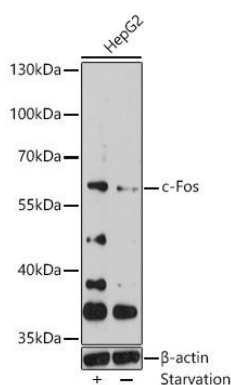
Recombinant fusion protein containing a sequence corresponding to amino acids 211-380 of human c-Fos (NP\_005243.1).

### Storage:

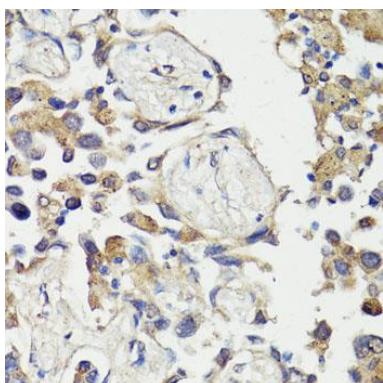
Store at -20°C. Avoid freeze / thaw cycles. Buffer: PBS with 0.02% sodium azide, 50% glycerol, pH7.3.

## Product Images

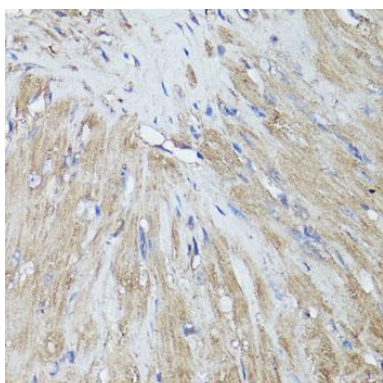
---



Western blot analysis of extracts of HepG2 cells, using c-Fos antibody (CAB0236) at 1:1000 dilution. HepG2 cells were treated by serum-starvation overnight. Secondary antibody: HRP Goat Anti-Rabbit IgG (H+L) (CABS014) at 1:10000 dilution. Lysates/proteins: 25ug per lane. Blocking buffer: 3% BSA. Detection: ECL Enhanced Kit (CABM00021). Exposure time: 5min.



Immunohistochemistry of paraffin-embedded human lung cancer using C-FOS antibody (CAB0236) at dilution of 1:150 (40x lens).



Immunohistochemistry of paraffin-embedded mouse heart using C-FOS antibody (CAB0236) at dilution of 1:150 (40x lens).