

# HSPB1 Rabbit Polyclonal Antibody



CAB0240

---

## Product Information

### Size:

20uL, 50uL, 100uL, 200uL

### Observed MW:

25kDa

### Calculated MW:

22kDa

### Applications:

WB IF IP

### Reactivity:

Human, Mouse, Rat

## Protein Background

The protein encoded by this gene is induced by environmental stress and developmental changes. The encoded protein is involved in stress resistance and actin organization and translocates from the cytoplasm to the nucleus upon stress induction. Defects in this gene are a cause of Charcot-Marie-Tooth disease type 2F (CMT2F) and distal hereditary motor neuropathy (dHMN).

## Immunogen information

### Gene ID:

3315

### Uniprot

P04792

### Synonyms:

HSPB1; CMT2F; HEL-S-102; HMN2B; HS.76067; HSP27; HSP28; Hsp25; SRP27

## Antibody Information

### Recommended dilutions:

WB 1:500 - 1:2000 IF 1:50 - 1:200 IP 1:50 - 1:100

### Source:

Rabbit

### Isotype:

IgG

### Purification:

Affinity purification

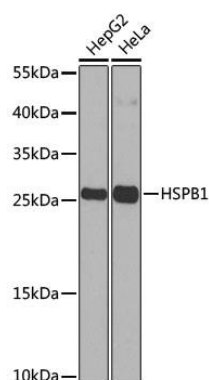
### Immunogen:

Recombinant fusion protein containing a sequence corresponding to amino acids 1-120 of human HSPB1 (NP\_001531.1).

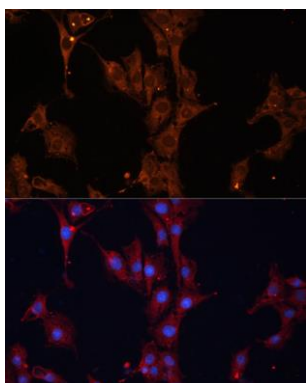
### Storage:

Store at -20°C. Avoid freeze / thaw cycles. Buffer: PBS with 0.02% sodium azide, 50% glycerol, pH7.3.

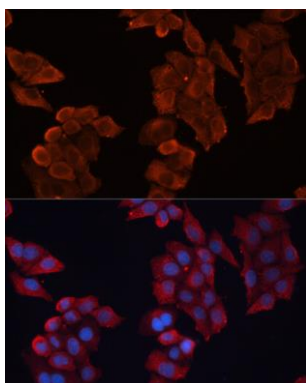
## Product Images



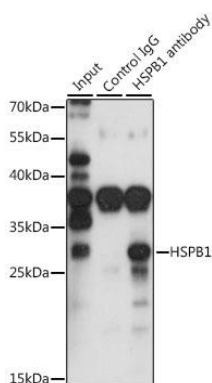
Western blot analysis of extracts of various cell lines, using HSPB1 antibody (CAB0240) at 1:1000 dilution. Secondary antibody: HRP Goat Anti-Rabbit IgG (H+L) (CABS014) at 1:10000 dilution. Lysates/proteins: 25ug per lane. Blocking buffer: 3% nonfat dry milk in TBST. Detection: ECL Basic Kit (CABM00020). Exposure time: 90s.



Immunofluorescence analysis of C6 cells using HSPB1 antibody (CAB0240) at dilution of 1:100. Blue: DAPI for nuclear staining.



Immunofluorescence analysis of HeLa cells using HSPB1 antibody (CAB0240) at dilution of 1:100. Blue: DAPI for nuclear staining.



Immunoprecipitation analysis of 200ug extracts of HepG2 cells, using 3 ug HSPB1 antibody (CAB0240). Western blot was performed from the immunoprecipitate using HSPB1 antibody (CAB0240) at a dilution of 1:1000.