

# IGF1R Rabbit Polyclonal Antibody



CAB0243

## Product Information

### Size:

20uL, 50uL, 100uL, 200uL

### Observed MW:

90kDa/130kDa

### Calculated MW:

154kDa

### Applications:

WB IHC IF

### Reactivity:

Human, Mouse, Rat

## Protein Background

This receptor binds insulin-like growth factor with a high affinity. It has tyrosine kinase activity. The insulin-like growth factor I receptor plays a critical role in transformation events. Cleavage of the precursor generates alpha and beta subunits. It is highly overexpressed in most malignant tissues where it functions as an anti-apoptotic agent by enhancing cell survival. Alternatively spliced transcript variants encoding distinct isoforms have been found for this gene.

## Immunogen information

### Gene ID:

3480

### Uniprot

P08069

### Synonyms:

IGF1R; CD221; IGFIR; IGFR; JTK13

## Antibody Information

### Recommended dilutions:

WB 1:500 - 1:2000 IHC 1:50  
- 1:200 IF 1:50 - 1:200

### Source:

Rabbit

### Isotype:

IgG

### Purification:

Affinity purification

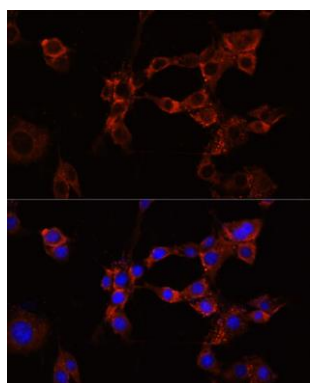
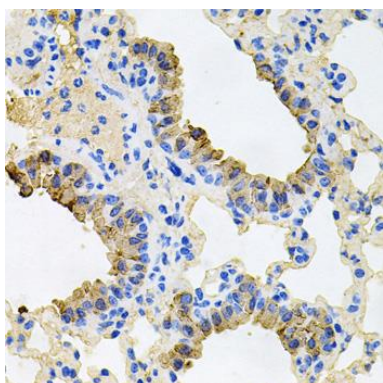
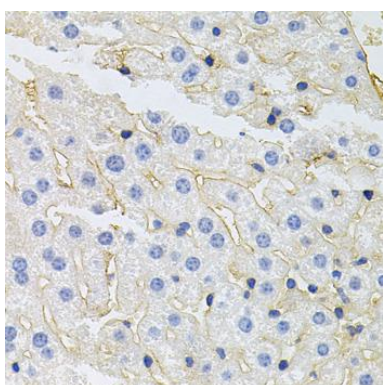
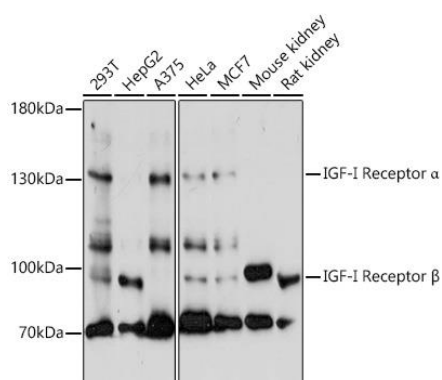
### Immunogen:

A synthetic peptide corresponding to a sequence within amino acids 660-760 of human IGF1R (NP\_000866.1).

### Storage:

Store at -20°C. Avoid freeze / thaw cycles. Buffer: PBS with 0.02% sodium azide, 50% glycerol, pH7.3.

## Product Images



Western blot analysis of extracts of various cell lines, using IGF1R antibody (CAB0243) at 1:1000 dilution. Secondary antibody: HRP Goat Anti-Rabbit IgG (H+L) (CABS014) at 1:10000 dilution. Lysates/proteins: 25ug per lane. Blocking buffer: 3% nonfat dry milk in TBST. Detection: ECL Enhanced Kit (CABM00021). Exposure time: 90s.

Immunohistochemistry of paraffin-embedded mouse liver using IGF1R antibody (CAB0243) at dilution of 1:100 (40x lens).

Immunohistochemistry of paraffin-embedded mouse lung using IGF1R antibody (CAB0243) at dilution of 1:100 (40x lens).

Immunofluorescence analysis of NIH/3T3 cells using IGF1R antibody (CAB0243) at dilution of 1:100 (40x lens). Blue: DAPI for nuclear staining.