

IKKε Rabbit Polyclonal Antibody



CAB0244

Product Information

Size:

20uL, 50uL, 100uL, 200uL

Observed MW:

93kDa

Calculated MW:

70kDa/80kDa

Applications:

WB IHC IF

Reactivity:

Human, Mouse, Rat

Protein Background

IKBKE is a noncanonical I-kappa-B (see MIM 164008) kinase (IKK) that is essential for regulating antiviral signaling pathways. IKBKE has also been identified as a breast cancer (MIM 114480) oncogene and is amplified and overexpressed in over 30% of breast carcinomas and breast cancer cell lines (Hutti et al., 2009 [PubMed 19481526]).[supplied by OMIM, Oct 2009]

Immunogen information

Gene ID:

9641

Uniprot

Q14164

Synonyms:

IKBKE; IKK-E; IKK-i; IKKE; IKKI

Antibody Information

Recommended dilutions:

WB 1:500 - 1:2000 IHC 1:50
- 1:200 IF 1:50 - 1:200

Source:

Rabbit

Isotype:

IgG

Purification:

Affinity purification

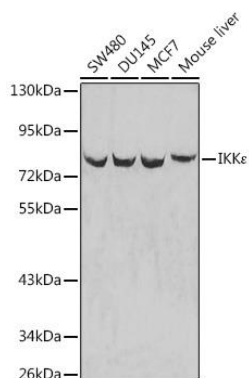
Immunogen:

Recombinant fusion protein containing a sequence corresponding to amino acids 495-716 of human IKKε (NP_054721.1).

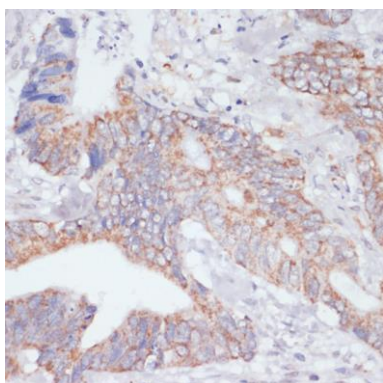
Storage:

Store at -20°C. Avoid freeze / thaw cycles. Buffer: PBS with 0.02% sodium azide, 50% glycerol, pH7.3.

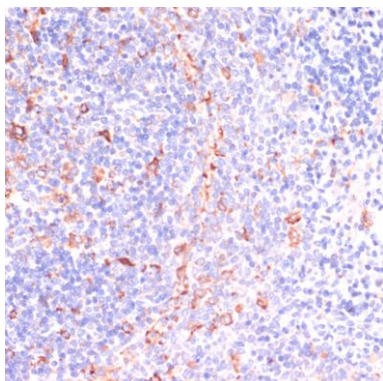
Product Images



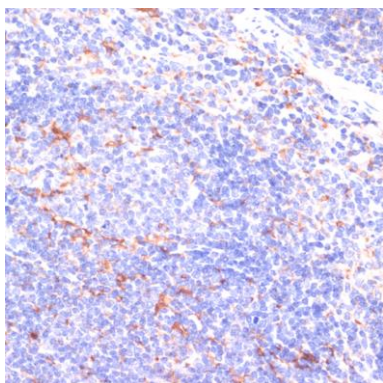
Western blot analysis of extracts of various cell lines, using IKKe antibody (CAB0244). Secondary antibody: HRP Goat Anti-Rabbit IgG (H+L) (CABS014) at 1:10000 dilution. Lysates/proteins: 25ug per lane. Blocking buffer: 3% nonfat dry milk in TBST.



Immunohistochemistry of paraffin-embedded human colon carcinoma using IKKe antibody (CAB0244) at dilution of 1:200 (40x lens).



Immunohistochemistry of paraffin-embedded rat spleen using IKKe antibody (CAB0244) at dilution of 1:200 (40x lens).



Immunohistochemistry of paraffin-embedded mouse spleen using IKKe antibody (CAB0244) at dilution of 1:200 (40x lens).