

# c-Jun Rabbit Polyclonal Antibody



CAB0246

---

## Product Information

### Size:

20uL, 50uL, 100uL, 200uL

### Observed MW:

46kDa/42kDa

### Calculated MW:

35kDa

### Applications:

WB IF

### Reactivity:

Human, Mouse, Rat

## Protein Background

This gene is the putative transforming gene of avian sarcoma virus 17. It encodes a protein which is highly similar to the viral protein, and which interacts directly with specific target DNA sequences to regulate gene expression. This gene is intronless and is mapped to 1p32-p31, a chromosomal region involved in both translocations and deletions in human malignancies.

## Immunogen information

### Gene ID:

3725

### Uniprot

P05412

### Synonyms:

AP-1; AP1; c-Jun; JUN; c

## Antibody Information

### Recommended dilutions:

WB 1:500 - 1:2000 IF 1:50 - 1:200

### Source:

Rabbit

### Isotype:

IgG

### Purification:

Affinity purification

### Immunogen:

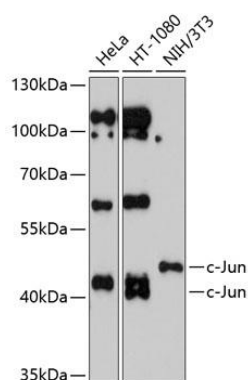
Recombinant fusion protein containing a sequence corresponding to amino acids 1-70 of human c-Jun (NP\_002219.1).

### Storage:

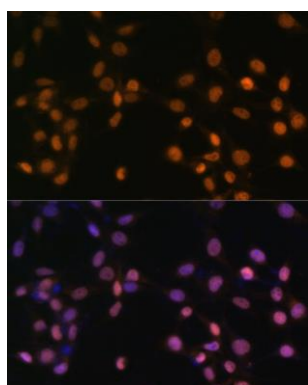
Store at -20°C. Avoid freeze / thaw cycles. Buffer: PBS with 0.02% sodium azide, 50% glycerol, pH7.3.

## Product Images

---



Western blot analysis of extracts of various cell lines, using c-Jun antibody (CAB0246) at 1:1000 dilution. Secondary antibody: HRP Goat Anti-Rabbit IgG (H+L) (CABS014) at 1:10000 dilution. Lysates/proteins: 25ug per lane. Blocking buffer: 3% nonfat dry milk in TBST. Detection: ECL Basic Kit (CABM00020). Exposure time: 90s.



Immunofluorescence analysis of NIH/3T3 cells using c-Jun antibody (CAB0246) at dilution of 1:100. Blue: DAPI for nuclear staining.