

KRT19 Rabbit Polyclonal Antibody



CAB0247

Product Information

Size:

20uL, 50uL, 100uL, 200uL

Observed MW:

46kDa

Calculated MW:

44kDa

Applications:

WB IHC IF

Reactivity:

Human, Mouse, Rat

Antibody Information

Recommended dilutions:

WB 1:500 - 1:2000 IHC 1:50
- 1:200 IF 1:50 - 1:200

Source:

Rabbit

Isotype:

IgG

Purification:

Affinity purification

Protein Background

The protein encoded by this gene is a member of the keratin family. The keratins are intermediate filament proteins responsible for the structural integrity of epithelial cells and are subdivided into cytokeratins and hair keratins. The type I cytokeratins consist of acidic proteins which are arranged in pairs of heterotypic keratin chains. Unlike its related family members, this smallest known acidic cytokeratin is not paired with a basic cytokeratin in epithelial cells. It is specifically expressed in the periderm, the transiently superficial layer that envelopes the developing epidermis. The type I cytokeratins are clustered in a region of chromosome 17q12-q21.

Immunogen information

Gene ID:

3880

Uniprot

P08727

Synonyms:

CK19; K19; K1CS; KRT19

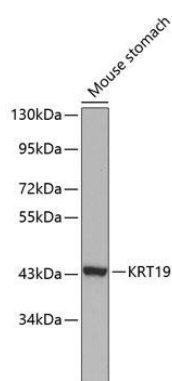
Immunogen:

Recombinant fusion protein containing a sequence corresponding to amino acids 241-400 of human KRT19 (NP_002267.2).

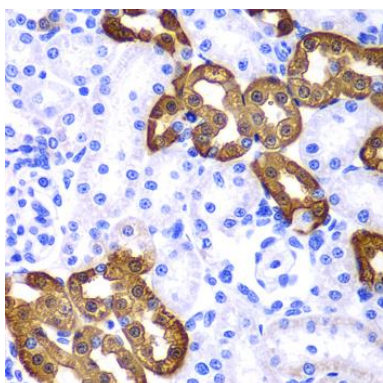
Storage:

Store at -20°C. Avoid freeze / thaw cycles. Buffer: PBS with 0.02% sodium azide, 50% glycerol, pH7.3.

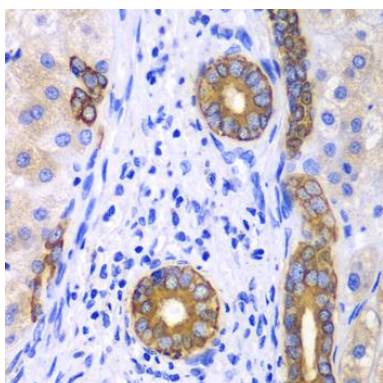
Product Images



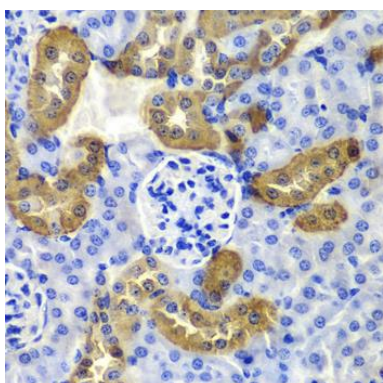
Western blot analysis of extracts of mouse stomach, using KRT19 antibody (CAB0247) at 1:1000 dilution. Secondary antibody: HRP Goat Anti-Rabbit IgG (H+L) (CABS014) at 1:10000 dilution. Lysates/proteins: 25ug per lane. Blocking buffer: 3% nonfat dry milk in TBST. Detection: ECL Basic Kit (CABM00020). Exposure time: 120s.



Immunohistochemistry of paraffin-embedded rat kidney using KRT19 antibody (CAB0247) at dilution of 1:100 (40x lens).



Immunohistochemistry of paraffin-embedded human liver cancer using KRT19 antibody (CAB0247) at dilution of 1:100 (40x lens).



Immunohistochemistry of paraffin-embedded mouse kidney using KRT19 antibody (CAB0247) at dilution of 1:100 (40x lens).