

KRT20 Rabbit Polyclonal Antibody



CAB0248

Product Information

Size:

20uL, 50uL, 100uL, 200uL

Observed MW:

43kDa

Calculated MW:

48kDa

Applications:

WB IHC IF

Reactivity:

Human, Mouse

Protein Background

The protein encoded by this gene is a member of the keratin family. The keratins are intermediate filament proteins responsible for the structural integrity of epithelial cells and are subdivided into cytokeratins and hair keratins. The type I cytokeratins consist of acidic proteins which are arranged in pairs of heterotypic keratin chains. This cytokeratin is a major cellular protein of mature enterocytes and goblet cells and is specifically expressed in the gastric and intestinal mucosa. The type I cytokeratin genes are clustered in a region of chromosome 17q12-q21.

Immunogen information

Gene ID:

54474

Uniprot

P35900

Synonyms:

CD20; CK-20; CK20; K20; KRT21; KRT20; Cytokeratin 20

Antibody Information

Recommended dilutions:

WB 1:500 - 1:2000 IHC 1:50
- 1:200 IF 1:50 - 1:200

Source:

Rabbit

Isotype:

IgG

Purification:

Affinity purification

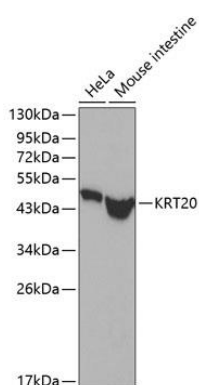
Immunogen:

Recombinant fusion protein containing a sequence corresponding to amino acids 245-424 of human KRT20 (NP_061883.1).

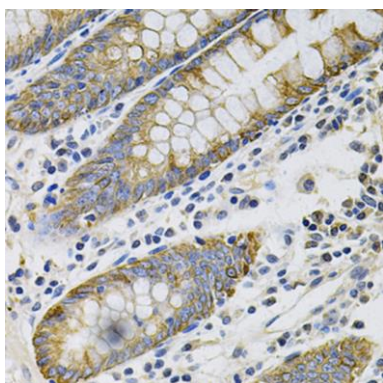
Storage:

Store at -20°C. Avoid freeze / thaw cycles. Buffer: PBS with 0.02% sodium azide, 50% glycerol, pH7.3.

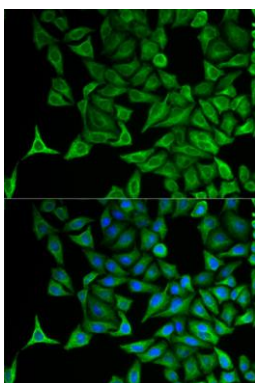
Product Images



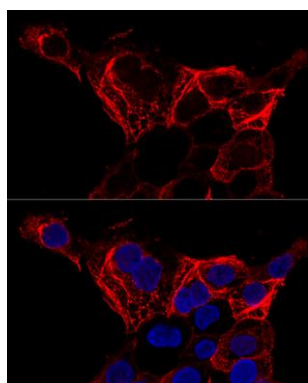
Western blot analysis of extracts of various cell lines, using KRT20 antibody (CAB0248). Secondary antibody: HRP Goat Anti-Rabbit IgG (H+L) (CABS014) at 1:10000 dilution. Lysates/proteins: 25ug per lane. Blocking buffer: 3% nonfat dry milk in TBST.



Immunohistochemistry of paraffin-embedded Human colon using KRT20 antibody (CAB0248) at dilution of 1:100 (40x lens).



Immunofluorescence analysis of HeLa cells using KRT20 antibody (CAB0248). Blue: DAPI for nuclear staining.



Confocal immunofluorescence analysis of A-431 cells using KRT20 antibody (CAB0248) at dilution of 1:200. Blue: DAPI for nuclear staining.