

# [KO Validated] Lamin A/C Rabbit Polyclonal Antibody

CAB0249



## Product Information

### Size:

20uL, 50uL, 100uL, 200uL

### Observed MW:

63kDa

### Calculated MW:

62-74kDa

### Applications:

WB IHC IF IP

### Reactivity:

Human, Mouse, Rat

## Protein Background

The nuclear lamina consists of a two-dimensional matrix of proteins located next to the inner nuclear membrane. The lamin family of proteins make up the matrix and are highly conserved in evolution. During mitosis, the lamina matrix is reversibly disassembled as the lamin proteins are phosphorylated. Lamin proteins are thought to be involved in nuclear stability, chromatin structure and gene expression. Vertebrate lamins consist of two types, A and B. Alternative splicing results in multiple transcript variants. Mutations in this gene lead to several diseases: Emery-Dreifuss muscular dystrophy, familial partial lipodystrophy, limb girdle muscular dystrophy, dilated cardiomyopathy, Charcot-Marie-Tooth disease, and Hutchinson-Gilford progeria syndrome.

## Immunogen information

### Gene ID:

4000

### Uniprot

P02545

## Antibody Information

### Recommended dilutions:

WB 1:500 - 1:2000 IHC 1:50  
- 1:200 IF 1:50 - 1:200 IP  
1:50 - 1:200

### Source:

Rabbit

### Isotype:

IgG

### Purification:

Affinity purification

### Synonyms:

LMNA; CDCC1; CDDC; CMD1A; CMT2B1; EMD2; FPL; FPLD; FPLD2;  
HGPS; IDC; LDP1; LFP; LGMD1B; LMN1; LMNC; LMNL1; MADA;  
PRO1; lamin; Lamin A/C

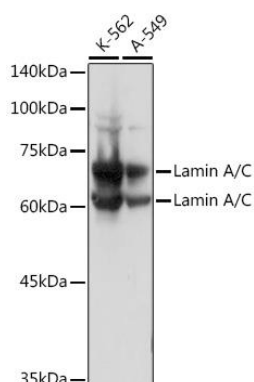
### Immunogen:

Recombinant fusion protein containing a sequence corresponding to amino acids 403-572 of human Lamin C (NP\_005563.1).

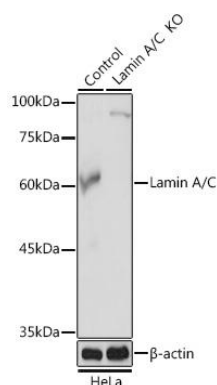
### Storage:

Store at -20°C. Avoid freeze / thaw cycles. Buffer: PBS with 0.02% sodium azide, 50% glycerol, pH7.3.

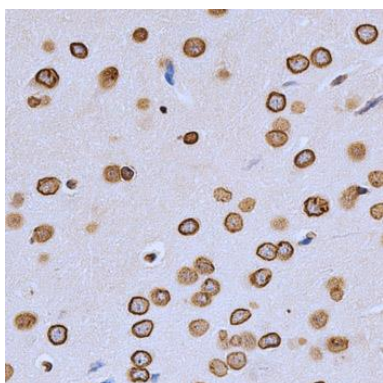
## Product Images



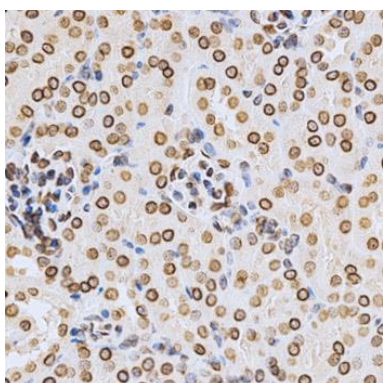
Western blot analysis of extracts of various cell lines, using Lamin A/C Rabbit pAb (CAB0249) at 1:3000 dilution. Secondary antibody: HRP Goat Anti-Rabbit IgG (H+L) (CABS014) at 1:10000 dilution. Lysates/proteins: 25ug per lane. Blocking buffer: 3% nonfat dry milk in TBST. Detection: ECL Basic Kit (CABM00020). Exposure time: 1s.



Western blot analysis of extracts from normal (control) and Lamin A/C Rabbit pAb knockout (KO) HeLa cells, using Lamin A/C Rabbit pAb antibody (CAB0249) at 1:3000 dilution. Secondary antibody: HRP Goat Anti-Rabbit IgG (H+L) (CABS014) at 1:10000 dilution. Lysates/proteins: 25ug per lane. Blocking buffer: 3% nonfat dry milk in TBST. Detection: ECL Basic Kit (CABM00020). Exposure time: 1s.



Immunohistochemistry of paraffin-embedded rat brain using Lamin A/C antibody (CAB0249) at dilution of 1:200 (40x lens).



Immunohistochemistry of paraffin-embedded mouse kidney using Lamin A/C antibody (CAB0249) at dilution of 1:200 (40x lens).