

# MCL1 Rabbit Polyclonal Antibody



CAB0250

## Product Information

### Size:

20uL, 50uL, 100uL, 200uL

### Observed MW:

37kDa

### Calculated MW:

28kDa/37kDa

### Applications:

WB IHC IF

### Reactivity:

Human, Mouse

## Protein Background

This gene encodes an anti-apoptotic protein, which is a member of the Bcl-2 family. Alternative splicing results in multiple transcript variants. The longest gene product (isoform 1) enhances cell survival by inhibiting apoptosis while the alternatively spliced shorter gene products (isoform 2 and isoform 3) promote apoptosis and are death-inducing.

## Immunogen information

### Gene ID:

4170

### Uniprot

Q07820

### Synonyms:

MCL1; BCL2L3; EAT; MCL1-ES; MCL1L; MCL1S; Mcl-1; TM; bcl2-L-3; mcl1/EAT; MCL1

## Antibody Information

### Recommended dilutions:

WB 1:500 - 1:2000 IHC

1:100 - 1:200 IF 1:50 -

1:200

### Source:

Rabbit

### Immunogen:

A synthetic peptide corresponding to a sequence within amino acids 120-220 of human MCL1 (NP\_068779.1).

### Storage:

Store at -20°C. Avoid freeze / thaw cycles. Buffer: PBS with 0.02% sodium azide, 50% glycerol, pH7.3.

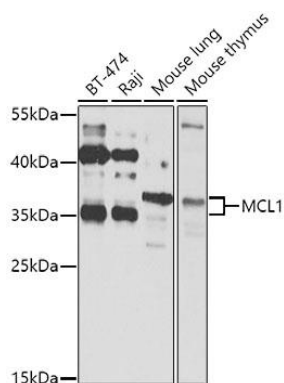
### Isotype:

IgG

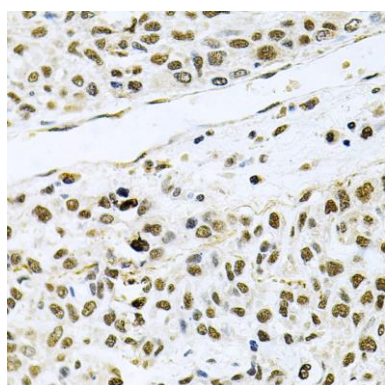
### Purification:

Affinity purification

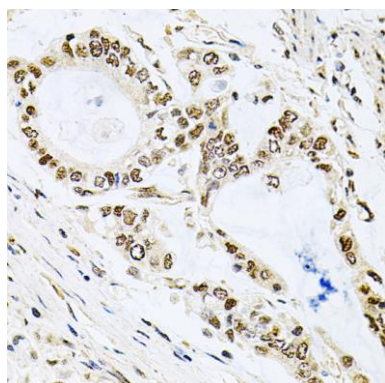
## Product Images



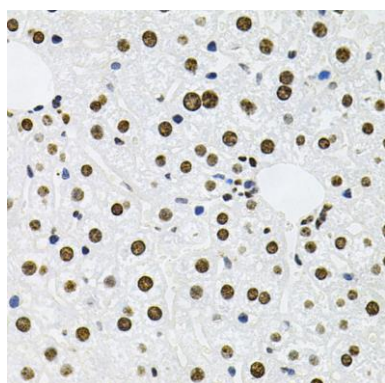
Western blot analysis of extracts of various cell lines, using MCL1 antibody (CAB0250) at 1:1000 dilution. Secondary antibody: HRP Goat Anti-Rabbit IgG (H+L) (CABS014) at 1:10000 dilution. Lysates/proteins: 25ug per lane. Blocking buffer: 3% nonfat dry milk in TBST. Detection: ECL Basic Kit (CABM00020). Exposure time: 30s.



Immunohistochemistry of paraffin-embedded human lung cancer using MCL1 antibody (CAB0250) at dilution of 1:100 (40x lens).



Immunohistochemistry of paraffin-embedded human gastric cancer using MCL1 antibody (CAB0250) at dilution of 1:100 (40x lens).



Immunohistochemistry of paraffin-embedded mouse liver using MCL1 antibody (CAB0250) at dilution of 1:100 (40x lens).