

# MAP2K1 Rabbit Polyclonal Antibody



CAB0252

## Product Information

### Size:

20uL, 50uL, 100uL, 200uL

### Observed MW:

46kDa

### Calculated MW:

40kDa/43kDa

### Applications:

WB IHC IF

### Reactivity:

Human, Mouse, Rat

## Antibody Information

### Recommended dilutions:

WB 1:500 - 1:2000 IHC 1:50  
- 1:200 IF 1:50 - 1:100

### Source:

Rabbit

### Isotype:

IgG

### Purification:

Affinity purification

## Protein Background

The protein encoded by this gene is a member of the dual specificity protein kinase family, which acts as a mitogen-activated protein (MAP) kinase kinase. MAP kinases, also known as extracellular signal-regulated kinases (ERKs), act as an integration point for multiple biochemical signals. This protein kinase lies upstream of MAP kinases and stimulates the enzymatic activity of MAP kinases upon wide variety of extra- and intracellular signals. As an essential component of MAP kinase signal transduction pathway, this kinase is involved in many cellular processes such as proliferation, differentiation, transcription regulation and development.

## Immunogen information

### Gene ID:

5604

### Uniprot

Q02750

### Synonyms:

CFC3; MAPKK1; MEK1; MKK1; PRKMK1; MAP2K1

### Immunogen:

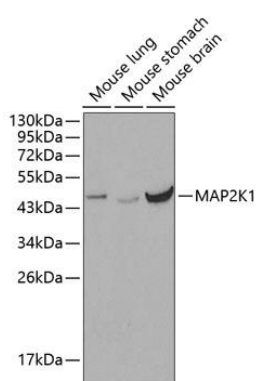
A synthetic peptide corresponding to a sequence within amino acids 1-100 of human MAP2K1 (NP\_002746.1).

### Storage:

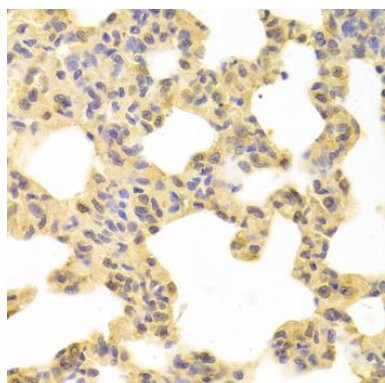
Store at -20°C. Avoid freeze / thaw cycles. Buffer: PBS with 0.02% sodium azide, 50% glycerol, pH7.3.

## Product Images

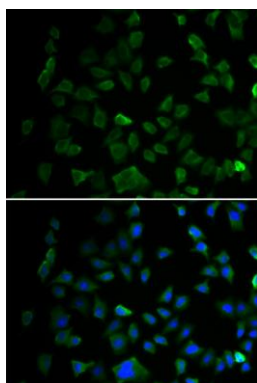
---



Western blot analysis of extracts of various cell lines, using MAP2K1 antibody (CAB0252). Secondary antibody: HRP Goat Anti-Rabbit IgG (H+L) (CABS014) at 1:10000 dilution. Lysates/proteins: 25ug per lane. Blocking buffer: 3% nonfat dry milk in TBST.



Immunohistochemistry of paraffin-embedded rat lung using MAP2K1 antibody (CAB0252) at dilution of 1:100 (40x lens).



Immunofluorescence analysis of U2OS cells using MAP2K1 antibody (CAB0252). Blue: DAPI for nuclear staining.