

MLH1 Rabbit Polyclonal Antibody



CAB0254

Product Information

Size:

20uL, 50uL, 100uL, 200uL

Observed MW:

95kDa

Calculated MW:

58kDa/73kDa/84kDa

Applications:

WB

Reactivity:

Human, Mouse

Antibody Information

Recommended dilutions:

WB 1:500 - 1:2000 IF 1:50 - 1:100

Source:

Rabbit

Isotype:

IgG

Purification:

Affinity purification

Protein Background

This gene was identified as a locus frequently mutated in hereditary nonpolyposis colon cancer (HNPCC). It is a human homolog of the E. coli DNA mismatch repair gene mutL, consistent with the characteristic alterations in microsatellite sequences (RER+phenotype) found in HNPCC. Alternative splicing results in multiple transcript variants encoding distinct isoforms. Additional transcript variants have been described, but their full-length natures have not been determined.

Immunogen information

Gene ID:

4292

Uniprot

P40692

Synonyms:

MLH1; COCA2; FCC2; HNPCC; HNPCC2; hMLH1

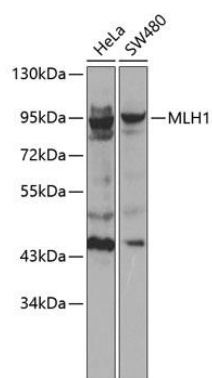
Immunogen:

Recombinant fusion protein containing a sequence corresponding to amino acids 400-600 of human MLH1 (NP_000240.1).

Storage:

Store at -20°C. Avoid freeze / thaw cycles. Buffer: PBS with 0.02% sodium azide, 50% glycerol, pH7.3.

Product Images



Western blot analysis of extracts of various cell lines, using MLH1 antibody (CAB0254). Secondary antibody: HRP Goat Anti-Rabbit IgG (H+L) (CABS014) at 1:10000 dilution. Lysates/proteins: 25ug per lane. Blocking buffer: 3% nonfat dry milk in TBST.