

NEFL Rabbit Polyclonal Antibody



CAB0257

Product Information

Size:

20uL, 50uL, 100uL, 200uL

Observed MW:

72kDa/68kDa

Calculated MW:

61kDa

Applications:

WB IHC IF

Reactivity:

Human, Mouse, Rat

Protein Background

Neurofilaments are type IV intermediate filament heteropolymers composed of light, medium, and heavy chains. Neurofilaments comprise the axoskeleton and they functionally maintain the neuronal caliber. They may also play a role in intracellular transport to axons and dendrites. This gene encodes the light chain neurofilament protein. Mutations in this gene cause Charcot-Marie-Tooth disease types 1F (CMT1F) and 2E (CMT2E), disorders of the peripheral nervous system that are characterized by distinct neuropathies. A pseudogene has been identified on chromosome Y.

Immunogen information

Gene ID:

4747

Uniprot

P07196

Synonyms:

NEFL; CMT1F; CMT2E; NF-L; NF68; NFL; PPP1R110

Antibody Information

Recommended dilutions:

WB 1:500 - 1:2000 IHC 1:50
- 1:200 IF 1:50 - 1:200

Source:

Rabbit

Isotype:

IgG

Purification:

Affinity purification

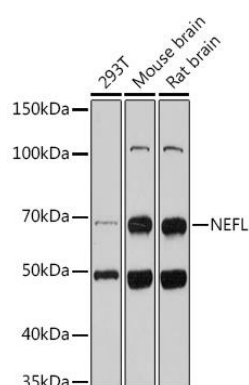
Immunogen:

Recombinant fusion protein containing a sequence corresponding to amino acids 400-543 of human NEFL (NP_006149.2).

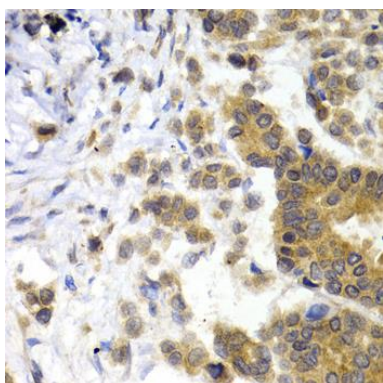
Storage:

Store at -20°C. Avoid freeze / thaw cycles. Buffer: PBS with 0.02% sodium azide, 50% glycerol, pH7.3.

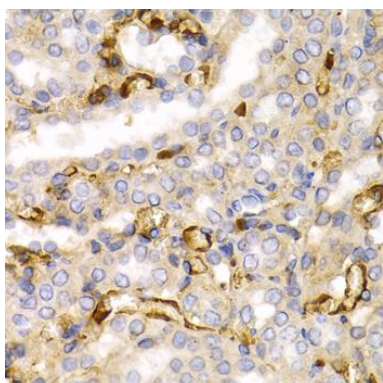
Product Images



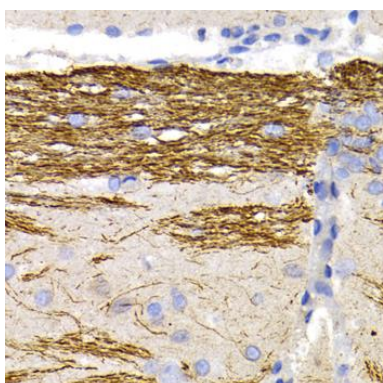
Western blot analysis of extracts of various cell lines, using NEFL antibody (CAB0257) at 1:500 dilution. Secondary antibody: HRP Goat Anti-Rabbit IgG (H+L) (CABS014) at 1:10000 dilution. Lysates/proteins: 25ug per lane. Blocking buffer: 3% nonfat dry milk in TBST. Detection: ECL Basic Kit (CABM00020). Exposure time: 120s.



Immunohistochemistry of paraffin-embedded human breast cancer using NEFL antibody (CAB0257) at dilution of 1:200 (40x lens).



Immunohistochemistry of paraffin-embedded rat kidney using NEFL antibody (CAB0257) at dilution of 1:200 (40x lens).



Immunohistochemistry of paraffin-embedded rat brain using NEFL antibody (CAB0257) at dilution of 1:200 (40x lens).