

NME1 Rabbit Polyclonal Antibody



CAB0259

Product Information

Size:

20uL, 50uL, 100uL, 200uL

Observed MW:

21kDa

Calculated MW:

17kDa/19kDa/30kDa

Applications:

WB IHC IF

Reactivity:

Human, Mouse, Rat

Antibody Information

Recommended dilutions:

WB 1:500 - 1:2000 IHC 1:50
- 1:200 IF 1:50 - 1:200

Source:

Rabbit

Isotype:

IgG

Purification:

Affinity purification

Protein Background

This gene (NME1) was identified because of its reduced mRNA transcript levels in highly metastatic cells. Nucleoside diphosphate kinase (NDK) exists as a hexamer composed of 'A' (encoded by this gene) and 'B' (encoded by NME2) isoforms. Mutations in this gene have been identified in aggressive neuroblastomas. Two transcript variants encoding different isoforms have been found for this gene. Co-transcription of this gene and the neighboring downstream gene (NME2) generates naturally-occurring transcripts (NME1-NME2), which encodes a fusion protein comprised of sequence sharing identity with each individual gene product.

Immunogen information

Gene ID:

4830

Uniprot

P15531

Synonyms:

NME1; AWD; GAAD; NB; NBS; NDKA; NDPK-A; NDPKA; NM23;
NM23-H1

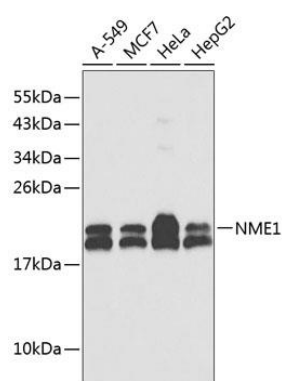
Immunogen:

A synthetic peptide corresponding to a sequence within amino acids 90 to the C-terminus of human NME1 (NP_000260.1).

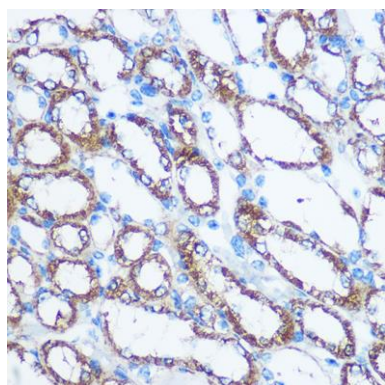
Storage:

Store at -20°C. Avoid freeze / thaw cycles. Buffer: PBS with 0.02% sodium azide, 50% glycerol, pH7.3.

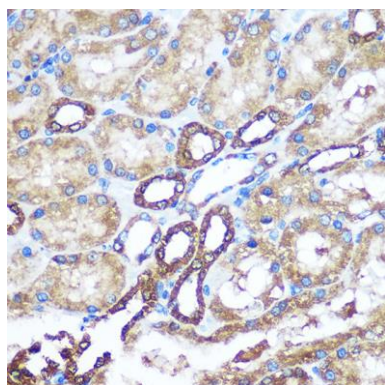
Product Images



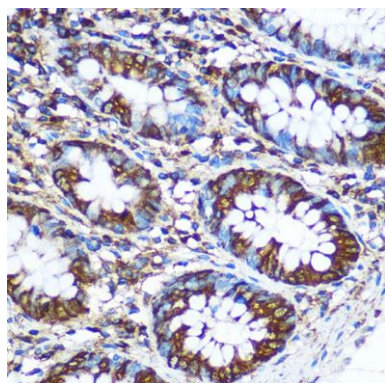
Western blot analysis of extracts of various cell lines, using NME1 antibody (CAB0259). Secondary antibody: HRP Goat Anti-Rabbit IgG (H+L) (CABS014) at 1:10000 dilution. Lysates/proteins: 25ug per lane. Blocking buffer: 3% nonfat dry milk in TBST.



Immunohistochemistry of paraffin-embedded Mouse kidney using NME1 Rabbit pAb (CAB0259) at dilution of 1:100 (40x lens).



Immunohistochemistry of paraffin-embedded Rat kidney using NME1 Rabbit pAb (CAB0259) at dilution of 1:100 (40x lens).



Immunohistochemistry of paraffin-embedded Human colon using NME1 Rabbit pAb (CAB0259) at dilution of 1:100 (40x lens).