

PIK3CA Rabbit Polyclonal Antibody



CAB0265

Product Information

Size:

20uL, 50uL, 100uL, 200uL

Observed MW:

115kDa

Calculated MW:

124kDa

Applications:

WB IHC IF

Reactivity:

Human, Mouse, Rat

Protein Background

Phosphatidylinositol 3-kinase is composed of an 85 kDa regulatory subunit and a 110 kDa catalytic subunit. The protein encoded by this gene represents the catalytic subunit, which uses ATP to phosphorylate PtdIns, PtdIns4P and PtdIns(4, 5)P2. This gene has been found to be oncogenic and has been implicated in cervical cancers. A pseudogene of this gene has been defined on chromosome 22.

Immunogen information

Gene ID:

5290

Uniprot

P42336

Synonyms:

PIK3CA; CLOVE; CWS5; MCAP; MCM; MCMT; PI3K; PI3K-alpha

Antibody Information

Recommended dilutions:

WB 1:500 - 1:2000 IHC 1:50
- 1:100 IF 1:50 - 1:100

Source:

Rabbit

Isotype:

IgG

Purification:

Affinity purification

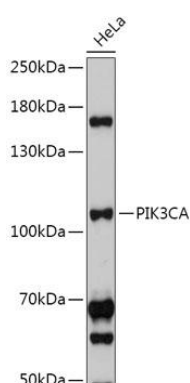
Immunogen:

Recombinant fusion protein containing a sequence corresponding to amino acids 401-600 of human PIK3CA (NP_006209.2).

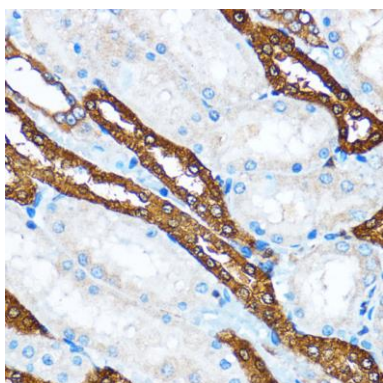
Storage:

Store at -20°C. Avoid freeze / thaw cycles. Buffer: PBS with 0.02% sodium azide, 50% glycerol, pH7.3.

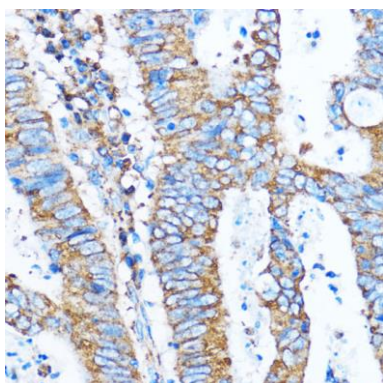
Product Images



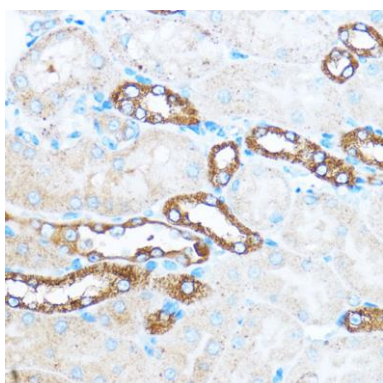
Western blot analysis of extracts of HeLa cells, using PIK3CA antibody (CAB0265) at 1:500 dilution. Secondary antibody: HRP Goat Anti-Rabbit IgG (H+L) (CABS014) at 1:10000 dilution. Lysates/proteins: 25ug per lane. Blocking buffer: 3% nonfat dry milk in TBST. Detection: ECL Basic Kit (CABM00020). Exposure time: 30s.



Immunohistochemistry of paraffin-embedded rat kidney using PIK3CA antibody (CAB0265) at dilution of 1:100 (40x lens).



Immunohistochemistry of paraffin-embedded human colon carcinoma using PIK3CA antibody (CAB0265) at dilution of 1:100 (40x lens).



Immunohistochemistry of paraffin-embedded mouse kidney using PIK3CA antibody (CAB0265) at dilution of 1:100 (40x lens).