

# POLR1C Rabbit Polyclonal Antibody



CAB0269

---

## Product Information

### Size:

20uL, 50uL, 100uL, 200uL

### Observed MW:

39kDa

### Calculated MW:

38kDa/39kDa

### Applications:

WB IHC IF

### Reactivity:

Human

## Protein Background

The protein encoded by this gene is a subunit of both RNA polymerase I and RNA polymerase III complexes. The encoded protein is part of the Pol core element. Mutations in this gene have been associated with Treacher Collins syndrome (TCS) and hypomyelinating leukodystrophy 11. Alternative splicing results in multiple transcript variants.

## Immunogen information

### Gene ID:

9533

### Uniprot

O15160

### Synonyms:

POLR1C; AC40; HLD11; RPA39; RPA40; RPA5; RPAC1; RPC40; TCS3

## Antibody Information

### Recommended dilutions:

WB 1:500 - 1:2000 IHC 1:50  
- 1:200 IF 1:50 - 1:200

### Source:

Rabbit

### Isotype:

IgG

### Purification:

Affinity purification

### Immunogen:

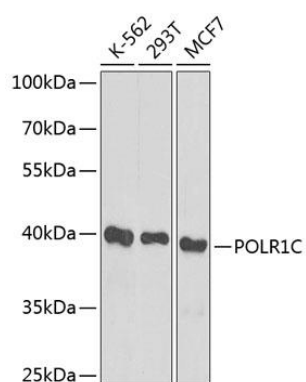
Recombinant fusion protein containing a sequence corresponding to amino acids 1-200 of human POLR1C (NP\_976035.1).

### Storage:

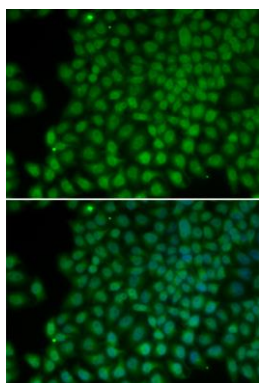
Store at -20°C. Avoid freeze / thaw cycles. Buffer: PBS with 0.02% sodium azide, 50% glycerol, pH7.3.

## Product Images

---



Western blot analysis of extracts of various cell lines, using POLR1C antibody (CAB0269) at 1:1000 dilution. Secondary antibody: HRP Goat Anti-Rabbit IgG (H+L) (CABS014) at 1:10000 dilution. Lysates/proteins: 25ug per lane. Blocking buffer: 3% nonfat dry milk in TBST. Detection: ECL Basic Kit (CABM00020). Exposure time: 90s.



Immunofluorescence analysis of HeLa cells using POLR1C antibody (CAB0269). Blue: DAPI for nuclear staining.