

RhoA Rabbit Polyclonal Antibody



CAB0272

Product Information

Size:

20uL, 50uL, 100uL, 200uL

Observed MW:

22kDa

Calculated MW:

21kDa

Applications:

WB IHC IF

Reactivity:

Human, Mouse, Rat

Protein Background

This gene encodes a member of the Rho family of small GTPases, which cycle between inactive GDP-bound and active GTP-bound states and function as molecular switches in signal transduction cascades. Rho proteins promote reorganization of the actin cytoskeleton and regulate cell shape, attachment, and motility. Overexpression of this gene is associated with tumor cell proliferation and metastasis. Multiple alternatively spliced variants have been identified.

Immunogen information

Gene ID:

387

Uniprot

P61586

Synonyms:

ARH12; ARHA; RHO12; RHOH12; Rho; RHOA; RhoA

Antibody Information

Recommended dilutions:

WB 1:500 - 1:2000 IHC 1:50
- 1:200 IF 1:50 - 1:200

Source:

Rabbit

Isotype:

IgG

Purification:

Affinity purification

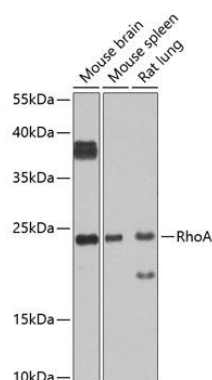
Immunogen:

A synthetic peptide corresponding to a sequence within amino acids 100 to the C-terminus of human RhoA (NP_001655.1).

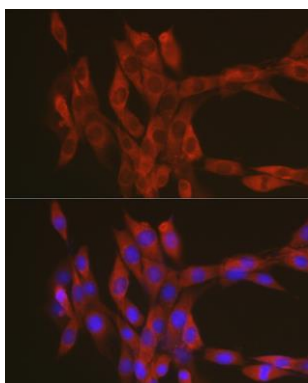
Storage:

Store at -20°C. Avoid freeze / thaw cycles. Buffer: PBS with 0.02% sodium azide, 50% glycerol, pH7.3.

Product Images



Western blot analysis of extracts of various cell lines, using RhoA antibody (CAB0272) at 1:1000 dilution. Secondary antibody: HRP Goat Anti-Rabbit IgG (H+L) (CABS014) at 1:10000 dilution. Lysates/proteins: 25ug per lane. Blocking buffer: 3% nonfat dry milk in TBST. Detection: ECL Basic Kit (CABM00020). Exposure time: 10s.



Immunofluorescence analysis of NIH-3T3 cells using RhoA Rabbit pAb (CAB0272) at dilution of 1:100 (40x lens). Blue: DAPI for nuclear staining.