

SIRT2 Rabbit Polyclonal Antibody



CAB0273

Product Information

Size:

20uL, 50uL, 100uL, 200uL

Observed MW:

38-44kDa

Calculated MW:

30kDa/35kDa/39kDa/41kDa/
43kDa

Applications:

WB IHC IF

Reactivity:

Human, Mouse, Rat

Antibody Information

Recommended dilutions:

WB 1:500 - 1:2000 IHC 1:50
- 1:200 IF 1:10 - 1:100

Source:

Rabbit

Isotype:

IgG

Purification:

Affinity purification

Protein Background

This gene encodes a member of the sirtuin family of proteins, homologs to the yeast Sir2 protein. Members of the sirtuin family are characterized by a sirtuin core domain and grouped into four classes. The functions of human sirtuins have not yet been determined; however, yeast sirtuin proteins are known to regulate epigenetic gene silencing and suppress recombination of rDNA. Studies suggest that the human sirtuins may function as intracellular regulatory proteins with mono-ADP-ribosyltransferase activity. The protein encoded by this gene is included in class I of the sirtuin family. Several transcript variants are resulted from alternative splicing of this gene.

Immunogen information

Gene ID:

22933

Uniprot

Q8IXJ6

Synonyms:

SIRT2; SIR2; SIR2L; SIR2L2; sirtuin 2

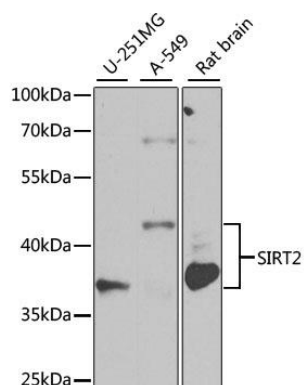
Immunogen:

Recombinant fusion protein containing a sequence corresponding to amino acids 288-389 of human SIRT2 (NP_036369.2).

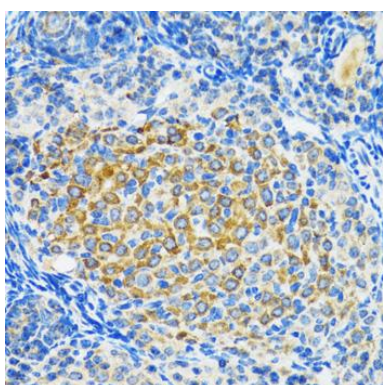
Storage:

Store at -20°C. Avoid freeze / thaw cycles. Buffer: PBS with 0.02% sodium azide, 50% glycerol, pH7.3.

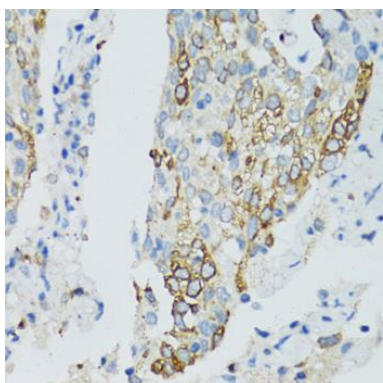
Product Images



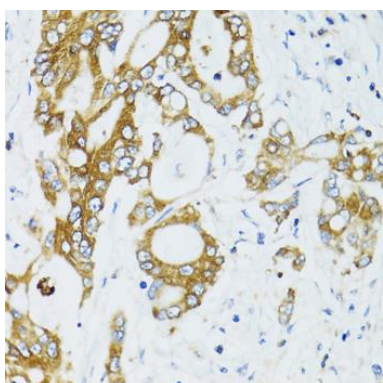
Western blot analysis of extracts of various cell lines, using SIRT2 antibody (CAB0273) at 1:1000 dilution. Secondary antibody: HRP Goat Anti-Rabbit IgG (H+L) (CABS014) at 1:10000 dilution. Lysates/proteins: 25ug per lane. Blocking buffer: 3% nonfat dry milk in TBST. Detection: ECL Basic Kit (CABM00020). Exposure time: 10s.



Immunohistochemistry of paraffin-embedded rat ovary using SIRT2 antibody (CAB0273) at dilution of 1:100 (40x lens).



Immunohistochemistry of paraffin-embedded human lung cancer using SIRT2 antibody (CAB0273) at dilution of 1:100 (40x lens).



Immunohistochemistry of paraffin-embedded human colon carcinoma using SIRT2 antibody (CAB0273) at dilution of 1:100 (40x lens).