

VCAM1 Rabbit Polyclonal Antibody



CAB0279

Product Information

Size:

20uL, 50uL, 100uL, 200uL

Observed MW:

103kDa

Calculated MW:

71kDa/74kDa/81kDa

Applications:

WB IHC IP

Reactivity:

Human, Mouse, Rat

Protein Background

This gene is a member of the Ig superfamily and encodes a cell surface sialoglycoprotein expressed by cytokine-activated endothelium. This type I membrane protein mediates leukocyte-endothelial cell adhesion and signal transduction, and may play a role in the development of atherosclerosis and rheumatoid arthritis. Three alternatively spliced transcripts encoding different isoforms have been described for this gene.

Immunogen information

Gene ID:

7412

Uniprot

P19320

Synonyms:

CD106; INCAM-100; VCAM1

Antibody Information

Recommended dilutions:

WB 1:1000 - 1:3000 IHC
1:50 - 1:200 IP 1:50 - 1:200

Source:

Rabbit

Isotype:

IgG

Purification:

Affinity purification

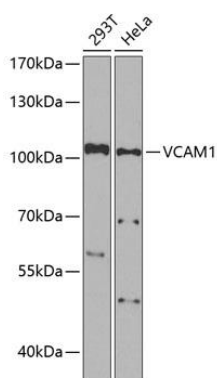
Immunogen:

A synthetic peptide corresponding to a sequence within amino acids 300-400 of human VCAM1 (NP_001069.1).

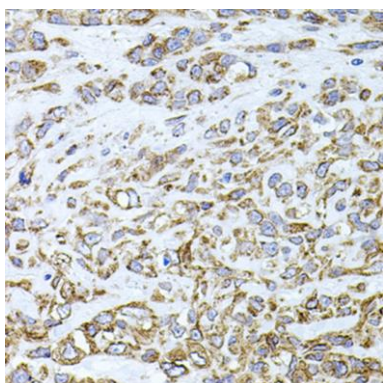
Storage:

Store at -20°C. Avoid freeze / thaw cycles. Buffer: PBS with 0.02% sodium azide, 50% glycerol, pH7.3.

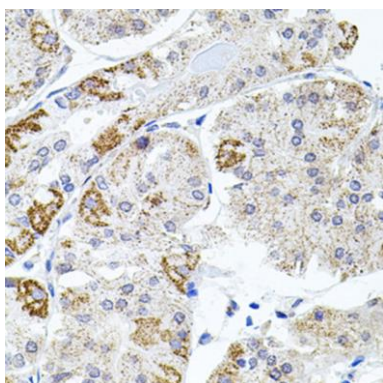
Product Images



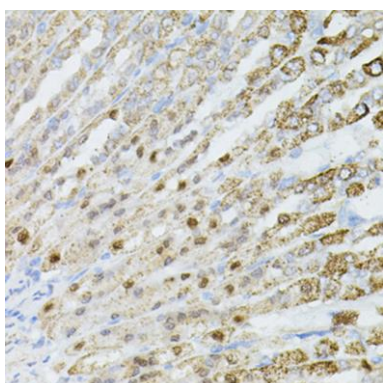
Western blot analysis of extracts of various cell lines, using VCAM1 Antibody (CAB0279) at 1:1000 dilution. Secondary antibody: HRP Goat Anti-Rabbit IgG (H+L) (CABS014) at 1:10000 dilution. Lysates/proteins: 25ug per lane. Blocking buffer: 3% nonfat dry milk in TBST. Detection: ECL Basic Kit (CABM00020). Exposure time: 90s.



Immunohistochemistry of paraffin-embedded Human lung cancer using VCAM1 antibody (CAB0279) at dilution of 1:100 (40x lens).



Immunohistochemistry of paraffin-embedded Human stomach using VCAM1 antibody (CAB0279) at dilution of 1:100 (40x lens).



Immunohistochemistry of paraffin-embedded Mouse stomach using VCAM1 antibody (CAB0279) at dilution of 1:100 (40x lens).