

ABL1 Rabbit Polyclonal Antibody



CAB0282

Product Information

Size:

20uL, 50uL, 100uL, 200uL

Observed MW:

139kDa

Calculated MW:

122kDa/124kDa

Applications:

WB IHC IF

Reactivity:

Human, Rat

Protein Background

This gene is a protooncogene that encodes a protein tyrosine kinase involved in a variety of cellular processes, including cell division, adhesion, differentiation, and response to stress. The activity of the protein is negatively regulated by its SH3 domain, whereby deletion of the region encoding this domain results in an oncogene. The ubiquitously expressed protein has DNA-binding activity that is regulated by CDC2-mediated phosphorylation, suggesting a cell cycle function. This gene has been found fused to a variety of translocation partner genes in various leukemias, most notably the t(9;22) translocation that results in a fusion with the 5' end of the breakpoint cluster region gene (BCR; MIM:151410). Alternative splicing of this gene results in two transcript variants, which contain alternative first exons that are spliced to the remaining common exons.

Immunogen information

Gene ID:

25

Uniprot

P00519

Antibody Information

Recommended dilutions:

WB 1:500 - 1:2000 IHC

1:100 - 1:200 IF 1:50 -

1:200

Source:

Rabbit

Isotype:

IgG

Purification:

Affinity purification

Synonyms:

ABL; JTK7; p150; c-ABL; v-abl; CHDSKM; c-ABL1; ABL1; c-Abl; bcr/abl

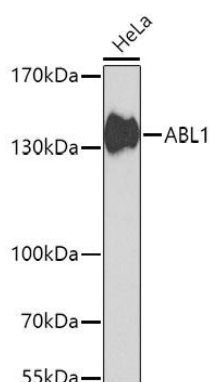
Immunogen:

A synthetic peptide corresponding to a sequence within amino acids 490-590 of human ABL1 (NP_005148.2).

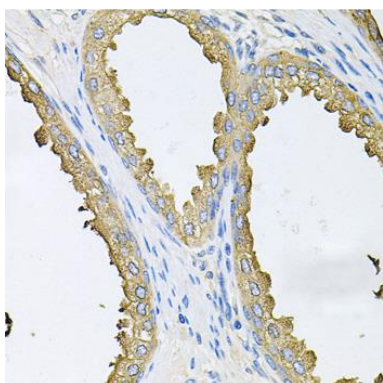
Storage:

Store at -20°C. Avoid freeze / thaw cycles. Buffer: PBS with 0.02% sodium azide, 50% glycerol, pH7.3.

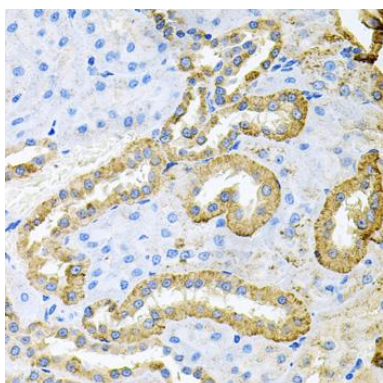
Product Images



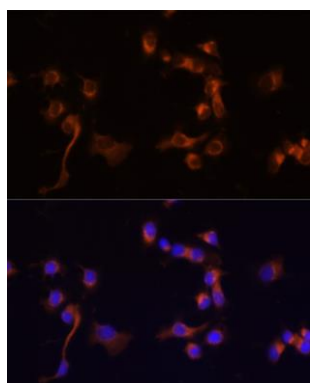
Western blot analysis of extracts of HeLa cells, using ABL1 antibody (CAB0282) at 1:1000 dilution. Secondary antibody: HRP Goat Anti-Rabbit IgG (H+L) (CABS014) at 1:10000 dilution. Lysates/proteins: 25ug per lane. Blocking buffer: 3% nonfat dry milk in TBST. Detection: ECL Basic Kit (CABM00020). Exposure time: 90s.



Immunohistochemistry of paraffin-embedded human prostate using ABL1 antibody (CAB0282) at dilution of 1:100 (40x lens).



Immunohistochemistry of paraffin-embedded rat kidney using ABL1 antibody (CAB0282) at dilution of 1:100 (40x lens).



Immunofluorescence analysis of A431 cells using ABL1 antibody (CAB0282) at dilution of 1:100 (40x lens). Blue: DAPI for nuclear staining.