

IFNA1 Rabbit Polyclonal Antibody



CAB0285

Product Information

Size:

20uL, 50uL, 100uL, 200uL

Observed MW:

21kDa

Calculated MW:

21kDa

Applications:

WB IF

Reactivity:

Human, Mouse, Rat

Antibody Information

Recommended dilutions:

WB 1:500 - 1:2000 IF 1:100
- 1:200

Source:

Rabbit

Isotype:

IgG

Purification:

Affinity purification

Protein Background

The protein encoded by this gene is produced by macrophages and has antiviral activity. This gene is intronless and the encoded protein is secreted.

Immunogen information

Gene ID:

3439

Uniprot

P01562

Synonyms:

IFNA1; IFL; IFN; IFN-ALPHA; IFN-alphaD; IFNA13; IFNA

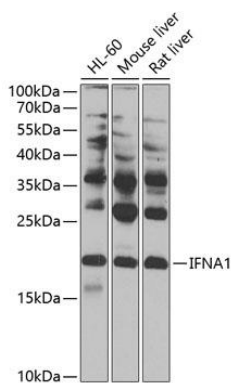
Immunogen:

Recombinant fusion protein containing a sequence corresponding to amino acids 25-155 of human IFNA1 (NP_076918.1).

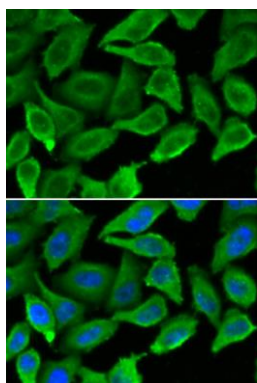
Storage:

Store at -20°C. Avoid freeze / thaw cycles. Buffer: PBS with 0.02% sodium azide, 50% glycerol, pH7.3.

Product Images



Western blot analysis of extracts of various cell lines, using IFNA1 antibody (CAB0285) at 1:1000 dilution. Secondary antibody: HRP Goat Anti-Rabbit IgG (H+L) (CABS014) at 1:10000 dilution. Lysates/proteins: 25ug per lane. Blocking buffer: 3% nonfat dry milk in TBST. Detection: ECL Basic Kit (CABM00020). Exposure time: 5s.



Immunofluorescence analysis of A549 cells using IFNA1 antibody (CAB0285). Blue: DAPI for nuclear staining.