

MMP9 Rabbit Polyclonal Antibody



CAB0289

Product Information

Size:

20uL, 50uL, 100uL, 200uL

Observed MW:

84kDa

Calculated MW:

78kDa

Applications:

WB IHC IF

Reactivity:

Human, Mouse, Rat

Antibody Information

Recommended dilutions:

WB 1:500 - 1:2000 IHC 1:50
- 1:200 IF 1:50 - 1:200

Source:

Rabbit

Isotype:

IgG

Purification:

Affinity purification

Protein Background

Proteins of the matrix metalloproteinase (MMP) family are involved in the breakdown of extracellular matrix in normal physiological processes, such as embryonic development, reproduction, and tissue remodeling, as well as in disease processes, such as arthritis and metastasis. Most MMP's are secreted as inactive proproteins which are activated when cleaved by extracellular proteinases. The enzyme encoded by this gene degrades type IV and V collagens. Studies in rhesus monkeys suggest that the enzyme is involved in IL-8-induced mobilization of hematopoietic progenitor cells from bone marrow, and murine studies suggest a role in tumor-associated tissue remodeling.

Immunogen information

Gene ID:

4318

Uniprot

P14780

Synonyms:

MMP9; CLG4B; GELB; MANDP2; MMP-9

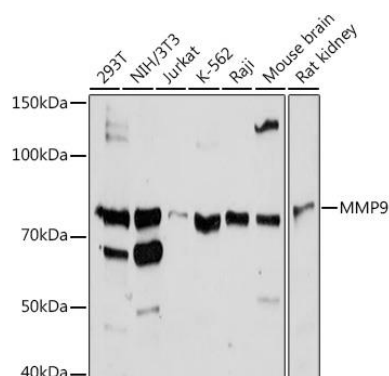
Immunogen:

Recombinant fusion protein containing a sequence corresponding to amino acids 538-707 of human MMP9 (NP_004985.2).

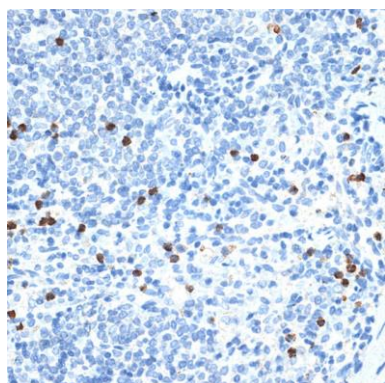
Storage:

Store at -20°C. Avoid freeze / thaw cycles. Buffer: PBS with 0.02% sodium azide, 50% glycerol, pH7.3.

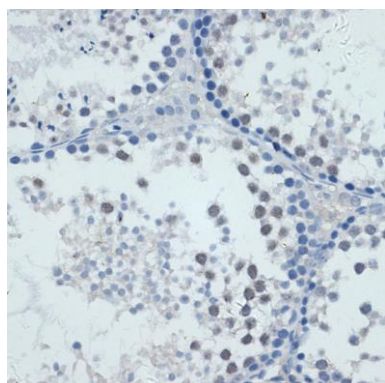
Product Images



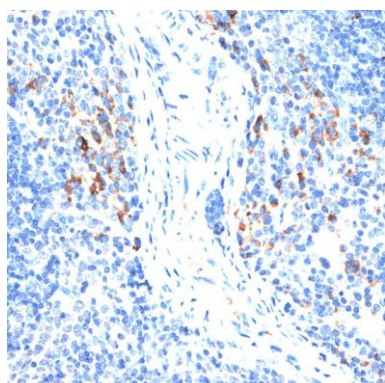
Western blot analysis of extracts of various cell lines, using MMP9 Rabbit pAb (CAB0289) at 1:1000 dilution. Secondary antibody: HRP Goat Anti-Rabbit IgG (H+L) (CABS014) at 1:10000 dilution. Lysates/proteins: 25ug per lane. Blocking buffer: 3% nonfat dry milk in TBST. Detection: ECL Basic Kit (CABM00020). Exposure time: 90s.



Immunohistochemistry of paraffin-embedded rat spleen using MMP9 antibody (CAB0289) at dilution of 1:100 (40x lens).



Immunohistochemistry of paraffin-embedded mouse testis using MMP9 antibody (CAB0289) at dilution of 1:100 (40x lens).



Immunohistochemistry of paraffin-embedded mouse spleen using MMP9 antibody (CAB0289) at dilution of 1:100 (40x lens).