

# XPO1 Rabbit Polyclonal Antibody



CAB0299

---

## Product Information

### Size:

20uL, 50uL, 100uL, 200uL

### Observed MW:

123kDa

### Calculated MW:

123kDa

### Applications:

WB

### Reactivity:

Human, Mouse

## Protein Background

This cell-cycle-regulated gene encodes a protein that mediates leucine-rich nuclear export signal (NES)-dependent protein transport. The protein specifically inhibits the nuclear export of Rev and U snRNAs. It is involved in the control of several cellular processes by controlling the localization of cyclin B, MPAK, and MAPKAP kinase 2. This protein also regulates NFAT and AP-1.

## Immunogen information

### Gene ID:

7514

### Uniprot

O14980

### Synonyms:

CRM1; emb; exp1; XPO1

## Antibody Information

### Recommended dilutions:

WB 1:500 - 1:2000

### Source:

Rabbit

### Isotype:

IgG

### Purification:

Affinity purification

### Immunogen:

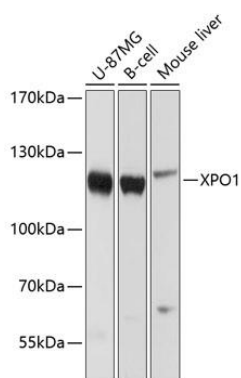
A synthetic peptide corresponding to a sequence within amino acids 1000 to the C-terminus of human XPO1 (NP\_003391.1).

### Storage:

Store at -20°C. Avoid freeze / thaw cycles. Buffer: PBS with 0.02% sodium azide, 50% glycerol, pH7.3.

## Product Images

---



Western blot analysis of extracts of various cell lines, using XPO1 antibody (CAB0299) at 1:1000 dilution. Secondary antibody: HRP Goat Anti-Rabbit IgG (H+L) (CABS014) at 1:10000 dilution. Lysates/proteins: 25ug per lane. Blocking buffer: 3% nonfat dry milk in TBST. Detection: ECL Enhanced Kit (CABM00021). Exposure time: 1s.