

# APOE Rabbit Polyclonal Antibody



CAB0304

---

## Product Information

### Size:

20uL, 50uL, 100uL, 200uL

### Observed MW:

34kDa

### Calculated MW:

36kDa

### Applications:

WB IHC IF

### Reactivity:

Human, Mouse, Rat

## Protein Background

The protein encoded by this gene is a major apoprotein of the chylomicron. It binds to a specific liver and peripheral cell receptor, and is essential for the normal catabolism of triglyceride-rich lipoprotein constituents. This gene maps to chromosome 19 in a cluster with the related apolipoprotein C1 and C2 genes. Mutations in this gene result in familial dysbetalipoproteinemia, or type III hyperlipoproteinemia (HLP III), in which increased plasma cholesterol and triglycerides are the consequence of impaired clearance of chylomicron and VLDL remnants.

## Immunogen information

### Gene ID:

348

### Uniprot

P02649

### Synonyms:

APOE; AD2; APO-E; ApoE4; LDLCQ5; LPG; ApoE

## Antibody Information

### Recommended dilutions:

WB 1:500 - 1:2000 IHC 1:50  
- 1:200 IF 1:50 - 1:200

### Source:

Rabbit

### Isotype:

IgG

### Purification:

Affinity purification

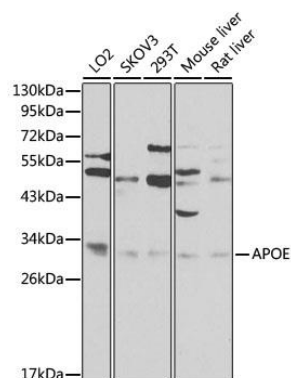
### Immunogen:

A synthetic peptide corresponding to a sequence within amino acids 200-300 of human APOE (NP\_000032.1).

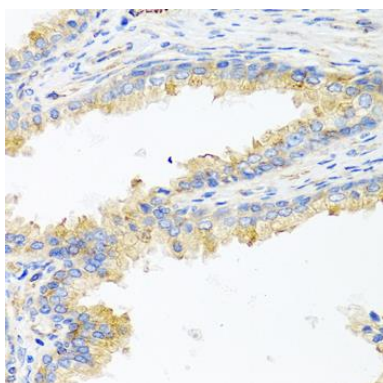
### Storage:

Store at -20°C. Avoid freeze / thaw cycles. Buffer: PBS with 0.02% sodium azide, 50% glycerol, pH7.3.

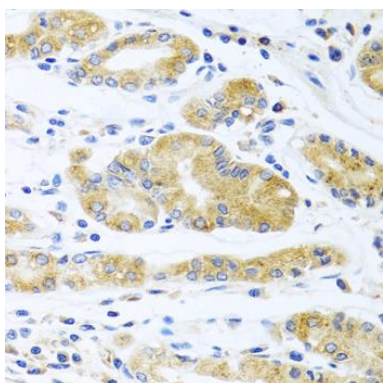
## Product Images



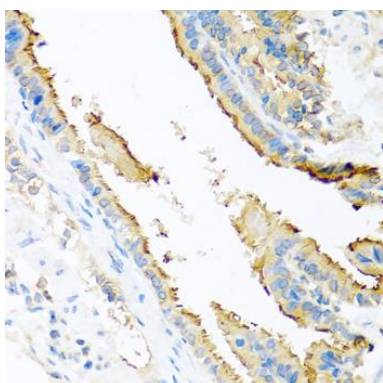
Western blot analysis of extracts of various cell lines, using ApoE antibody (CAB0304) at 1:1000 dilution. Secondary antibody: HRP Goat Anti-Rabbit IgG (H+L) (CABS014) at 1:10000 dilution. Lysates/proteins: 25ug per lane. Blocking buffer: 3% nonfat dry milk in TBST. Detection: ECL Basic Kit (CABM00020). Exposure time: 90s.



Immunohistochemistry of paraffin-embedded human prostate using ApoE antibody (CAB0304) at dilution of 1:100 (40x lens).



Immunohistochemistry of paraffin-embedded human stomach using ApoE antibody (CAB0304) at dilution of 1:100 (40x lens).



Immunohistochemistry of paraffin-embedded mouse lung using ApoE antibody (CAB0304) at dilution of 1:100 (40x lens).