

# Cyclin D1 Rabbit Polyclonal Antibody



CAB0310

## Product Information

### Size:

20uL, 50uL, 100uL, 200uL

### Observed MW:

34kDa

### Calculated MW:

33kDa

### Applications:

WB IHC

### Reactivity:

Human, Rat

## Antibody Information

### Recommended dilutions:

WB 1:500 - 1:1000 IHC 1:50  
- 1:100

### Source:

Rabbit

### Isotype:

IgG

### Purification:

Affinity purification

## Protein Background

The protein encoded by this gene belongs to the highly conserved cyclin family, whose members are characterized by a dramatic periodicity in protein abundance throughout the cell cycle. Cyclins function as regulators of CDK kinases. Different cyclins exhibit distinct expression and degradation patterns which contribute to the temporal coordination of each mitotic event. This cyclin forms a complex with and functions as a regulatory subunit of CDK4 or CDK6, whose activity is required for cell cycle G1/S transition. This protein has been shown to interact with tumor suppressor protein Rb and the expression of this gene is regulated positively by Rb. Mutations, amplification and overexpression of this gene, which alters cell cycle progression, are observed frequently in a variety of tumors and may contribute to tumorigenesis.

## Immunogen information

### Gene ID:

595

### Uniprot

P24385

### Synonyms:

BCL1; D11S287E; PRAD1; U21B31; CCND1; Cyclin D1; cyclin D1

### Immunogen:

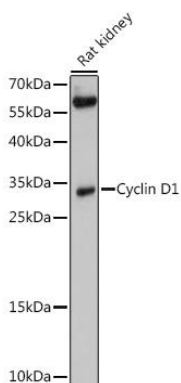
Recombinant fusion protein containing a sequence corresponding to amino acids 96-295 of human Cyclin D1 (NP\_444284.1).

### Storage:

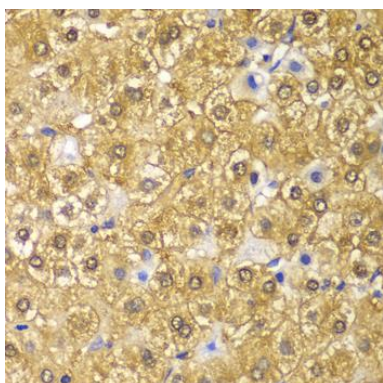
Store at -20°C. Avoid freeze / thaw cycles. Buffer: PBS with 0.02% sodium azide, 50% glycerol, pH7.3.

## Product Images

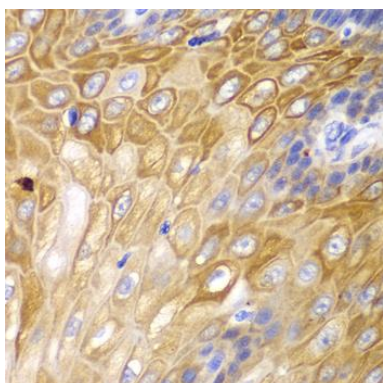
---



Western blot analysis of extracts of rat kidney, using Cyclin D1 antibody (CAB0310) at 1:1000 dilution. Secondary antibody: HRP Goat Anti-Rabbit IgG (H+L) (CABS014) at 1:10000 dilution. Lysates/proteins: 25ug per lane. Blocking buffer: 3% nonfat dry milk in TBST. Detection: ECL Basic Kit (CABM00020). Exposure time: 90s.



Immunohistochemistry of paraffin-embedded human liver cancer using Cyclin D1 antibody (CAB0310) at dilution of 1:100 (40x lens).



Immunohistochemistry of paraffin-embedded human esophagus using Cyclin D1 antibody (CAB0310) at dilution of 1:100 (40x lens).