

# PGR Rabbit Polyclonal Antibody



CAB0321

---

## Product Information

### Size:

20uL, 50uL, 100uL, 200uL

### Observed MW:

90kDa/118kDa

### Calculated MW:

36kDa/38kDa/82kDa/87kDa/  
98kDa

### Applications:

WB IHC

### Reactivity:

Human, Mouse, Rat

## Antibody Information

### Recommended dilutions:

WB 1:500 - 1:2000 IHC 1:50  
- 1:100

### Source:

Rabbit

### Isotype:

IgG

### Purification:

Affinity purification

## Protein Background

This gene encodes a member of the steroid receptor superfamily. The encoded protein mediates the physiological effects of progesterone, which plays a central role in reproductive events associated with the establishment and maintenance of pregnancy. This gene uses two distinct promoters and translation start sites in the first exon to produce several transcript variants, both protein coding and non-protein coding. Two of the isoforms (A and B) are identical except for an additional 165 amino acids found in the N-terminus of isoform B and mediate their own response genes and physiologic effects with little overlap.

## Immunogen information

### Gene ID:

5241

### Uniprot

P06401

### Synonyms:

NR3C3; PR; PGR

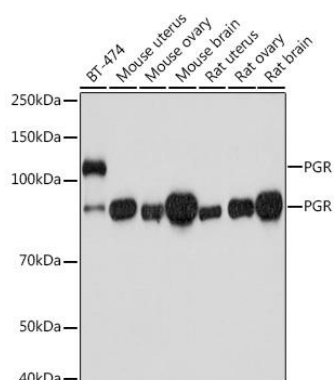
### Immunogen:

Recombinant fusion protein containing a sequence corresponding to amino acids 1-250 of human PGR (NP\_000917.3).

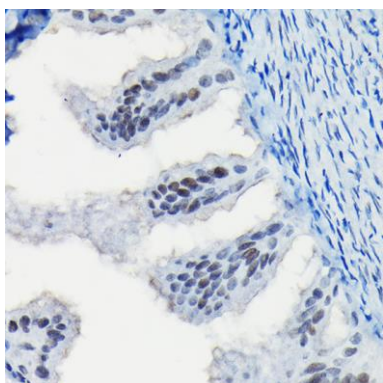
### Storage:

Store at -20°C. Avoid freeze / thaw cycles. Buffer: PBS with 0.02% sodium azide, 50% glycerol, pH7.3.

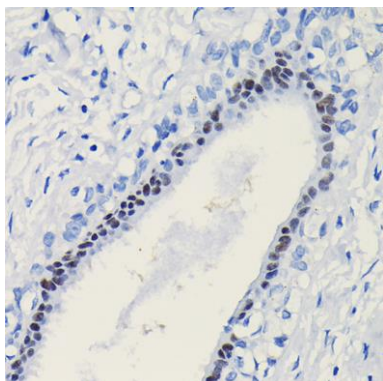
## Product Images



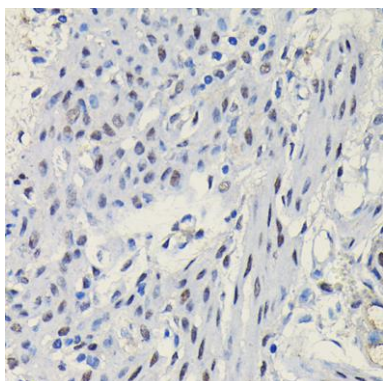
Western blot analysis of extracts of various cell lines, using PGR antibody (CAB0321) at 1:1000 dilution. Secondary antibody: HRP Goat Anti-Rabbit IgG (H+L) (CABS014) at 1:10000 dilution. Lysates/proteins: 25ug per lane. Blocking buffer: 3% nonfat dry milk in TBST. Detection: ECL Basic Kit (CABM00020). Exposure time: 180s.



Immunohistochemistry of paraffin-embedded rat fallopian tube using PGR Rabbit pAb (CAB0321) at dilution of 1:100 (40x lens).



Immunohistochemistry of paraffin-embedded human breast cancer using PGR Rabbit pAb (CAB0321) at dilution of 1:100 (40x lens).



Immunohistochemistry of paraffin-embedded mouse uterus using PGR Rabbit pAb (CAB0321) at dilution of 1:100 (40x lens).