

SRC Rabbit Polyclonal Antibody



CAB0324

Product Information

Size:

20uL, 50uL, 100uL, 200uL

Observed MW:

60KDa

Calculated MW:

59kDa/60kDa

Applications:

WB IP

Reactivity:

Human, Mouse, Rat

Protein Background

This gene is highly similar to the v-src gene of Rous sarcoma virus. This proto-oncogene may play a role in the regulation of embryonic development and cell growth. The protein encoded by this gene is a tyrosine-protein kinase whose activity can be inhibited by phosphorylation by c-SRC kinase. Mutations in this gene could be involved in the malignant progression of colon cancer. Two transcript variants encoding the same protein have been found for this gene.

Immunogen information

Gene ID:

6714

Uniprot

P12931

Synonyms:

ASV; SRC1; THC6; c-SRC; p60-Src; SRC

Antibody Information

Recommended dilutions:

WB 1:500 - 1:1000 IP 1:50 - 1:200

Source:

Rabbit

Isotype:

IgG

Purification:

Affinity purification

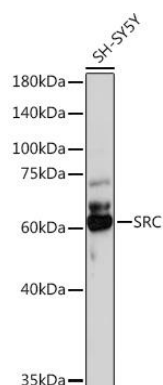
Immunogen:

Recombinant fusion protein containing a sequence corresponding to amino acids 410-536 of human SRC (NP_005408.1).

Storage:

Store at -20°C. Avoid freeze / thaw cycles. Buffer: PBS with 0.02% sodium azide, 50% glycerol, pH7.3.

Product Images



Western blot analysis of extracts of SH-SY5Y cells, using SRC Rabbit pAb (CAB0324) at 1:1000 dilution. Secondary antibody: HRP Goat Anti-Rabbit IgG (H+L) (CABS014) at 1:10000 dilution. Lysates/proteins: 25ug per lane. Blocking buffer: 3% nonfat dry milk in TBST. Detection: ECL Basic Kit (CABM00020). Exposure time: 3s.