

Albumin Rabbit Polyclonal Antibody



CAB0353

Product Information

Size:

20uL, 50uL, 100uL, 200uL

Observed MW:

69kDa

Calculated MW:

45kDa/47kDa/69kDa

Applications:

WB IHC IF

Reactivity:

Human, Mouse, Rat

Protein Background

Albumin is a soluble, monomeric protein which comprises about one-half of the blood serum protein. Albumin functions primarily as a carrier protein for steroids, fatty acids, and thyroid hormones and plays a role in stabilizing extracellular fluid volume. Albumin is a globular unglycosylated serum protein of molecular weight 65, 000. Albumin is synthesized in the liver as prealbumin which has an N-terminal peptide that is removed before the nascent protein is released from the rough endoplasmic reticulum. The product, proalbumin, is in turn cleaved in the Golgi vesicles to produce the secreted albumin.

Immunogen information

Gene ID:

213

Uniprot

P02768

Synonyms:

ALB; HSA; PRO0883; PRO0903; PRO1341; albumin; Albumin

Antibody Information

Recommended dilutions:

WB 1:500 - 1:2000 IHC 1:50
- 1:100 IF 1:50 - 1:100

Source:

Rabbit

Isotype:

IgG

Purification:

Affinity purification

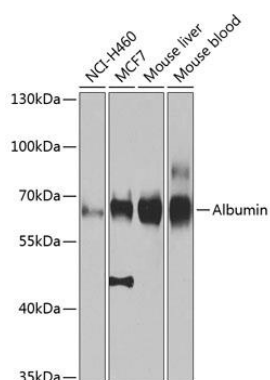
Immunogen:

Recombinant fusion protein containing a sequence corresponding to amino acids 20-255 of human Albumin (NP_000468.1).

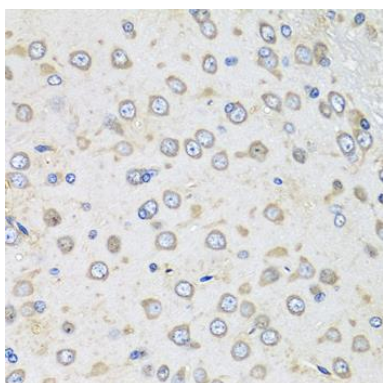
Storage:

Store at -20°C. Avoid freeze / thaw cycles. Buffer: PBS with 0.02% sodium azide, 50% glycerol, pH7.3.

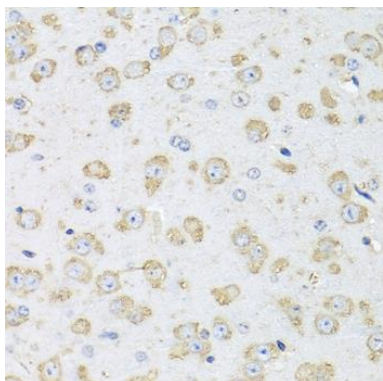
Product Images



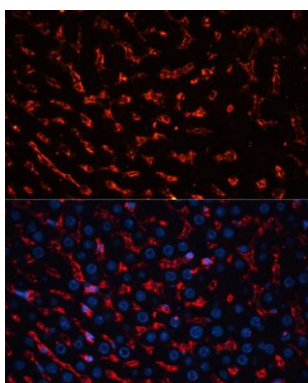
Western blot analysis of extracts of various cell lines, using Albumin antibody (CAB0353) at 1:1000 dilution. Secondary antibody: HRP Goat Anti-Rabbit IgG (H+L) (CABS014) at 1:10000 dilution. Lysates/proteins: 25ug per lane. Blocking buffer: 3% nonfat dry milk in TBST. Detection: ECL Basic Kit (CABM00020). Exposure time: 15s.



Immunohistochemistry of paraffin-embedded rat brain using Albumin antibody (CAB0353) at dilution of 1:100 (40x lens).



Immunohistochemistry of paraffin-embedded mouse brain using Albumin antibody (CAB0353) at dilution of 1:100 (40x lens).



Immunofluorescence analysis of rat liver using Albumin antibody (CAB0353) at dilution of 1:100. Blue: DAPI for nuclear staining.