

PTPRC Rabbit Polyclonal Antibody



CAB0372

Product Information

Size:

20uL, 50uL, 100uL, 200uL

Observed MW:

200-250kDa

Calculated MW:

130kDa/147kDa

Applications:

WB IF IP

Reactivity:

Human, Mouse

Antibody Information

Recommended dilutions:

WB 1:500 - 1:2000 IF 1:50 -
1:200 IP 1:50 - 1:200

Source:

Rabbit

Isotype:

IgG

Purification:

Affinity purification

Protein Background

The protein encoded by this gene is a member of the protein tyrosine phosphatase (PTP) family. PTPs are known to be signaling molecules that regulate a variety of cellular processes including cell growth, differentiation, mitosis, and oncogenic transformation. This PTP contains an extracellular domain, a single transmembrane segment and two tandem intracytoplasmic catalytic domains, and thus is classified as a receptor type PTP. This PTP has been shown to be an essential regulator of T- and B-cell antigen receptor signaling. It functions through either direct interaction with components of the antigen receptor complexes, or by activating various Src family kinases required for the antigen receptor signaling. This PTP also suppresses JAK kinases, and thus functions as a regulator of cytokine receptor signaling. Alternatively spliced transcripts variants of this gene, which encode distinct isoforms, have been reported.

Immunogen information

Gene ID:

5788

Uniprot

P08575

Synonyms:

B220; CD45; CD45R; GP180; L-CA; LCA; LY5; T200; PTPRC

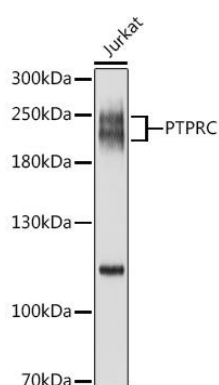
Immunogen:

Recombinant fusion protein containing a sequence corresponding to amino acids 1057-1306 of human PTPRC (NP_002829.3).

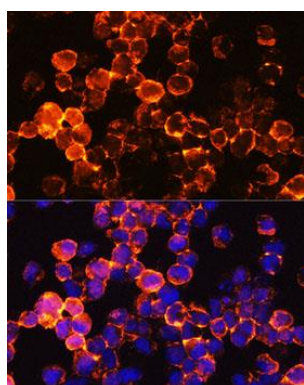
Storage:

Store at -20°C. Avoid freeze / thaw cycles. Buffer: PBS with 0.02% sodium azide, 50% glycerol, pH7.3.

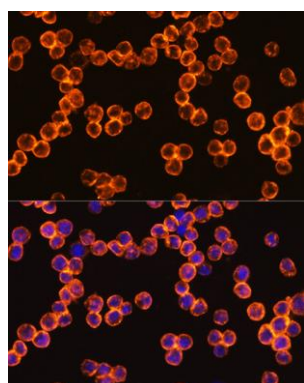
Product Images



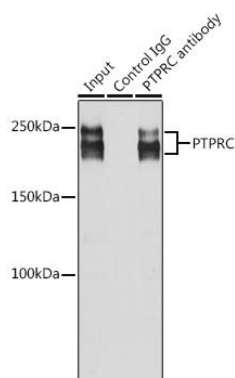
Western blot analysis of extracts of Jurkat cells, using PTPRC antibody (CAB0372) at 1:1000 dilution. Secondary antibody: HRP Goat Anti-Rabbit IgG (H+L) (CABS014) at 1:10000 dilution. Lysates/proteins: 25ug per lane. Blocking buffer: 3% nonfat dry milk in TBST. Detection: ECL Basic Kit (CABM00020). Exposure time: 1s.



Immunofluorescence analysis of Jurkat cells using PTPRC Rabbit pAb (CAB0372) at dilution of 1:100. Blue: DAPI for nuclear staining.



Immunofluorescence analysis of RAW264.7 cells using PTPRC Rabbit pAb (CAB0372) at dilution of 1:100. Blue: DAPI for nuclear staining.



Immunoprecipitation analysis of 200ug extracts of Jurkat cells using 3ug PTPRC antibody (CAB0372). Western blot was performed from the immunoprecipitate using PTPRC antibody (CAB0372) at a dilution of 1:1000.