

# TP73 Rabbit Polyclonal Antibody



CAB0385

## Product Information

### Size:

20uL, 50uL, 100uL, 200uL

### Observed MW:

80kDa

### Calculated MW:

38- 69kDa

### Applications:

WB IHC IF IP

### Reactivity:

Human, Mouse, Rat

## Antibody Information

### Recommended dilutions:

WB 1:500 - 1:2000 IHC 1:50  
- 1:200 IF 1:50 - 1:200 IP  
1:50 - 1:200

### Source:

Rabbit

### Isotype:

IgG

### Purification:

Affinity purification

## Protein Background

This gene encodes a member of the p53 family of transcription factors involved in cellular responses to stress and development. It maps to a region on chromosome 1p36 that is frequently deleted in neuroblastoma and other tumors, and thought to contain multiple tumor suppressor genes. The demonstration that this gene is monoallelically expressed (likely from the maternal allele), supports the notion that it is a candidate gene for neuroblastoma. Many transcript variants resulting from alternative splicing and/or use of alternate promoters have been found for this gene, but the biological validity and the full-length nature of some variants have not been determined.

## Immunogen information

### Gene ID:

7161

### Uniprot

O15350

### Synonyms:

TP73; P73

### Immunogen:

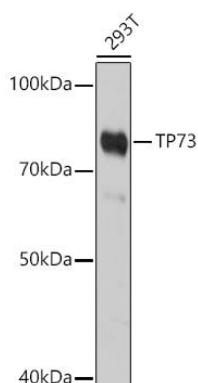
Recombinant fusion protein containing a sequence corresponding to amino acids 1-100 of human TP73 (NP\_005418.1).

### Storage:

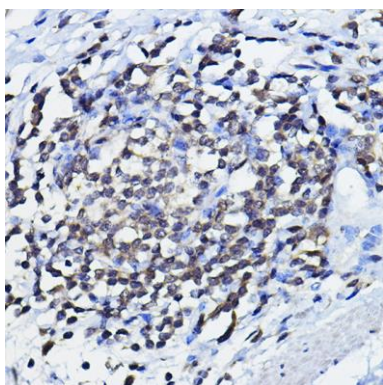
Store at -20°C. Avoid freeze / thaw cycles. Buffer: PBS with 0.02% sodium azide, 50% glycerol, pH7.3.

## Product Images

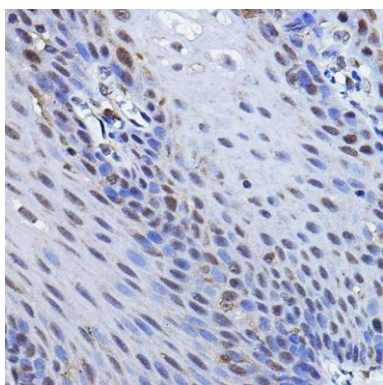
---



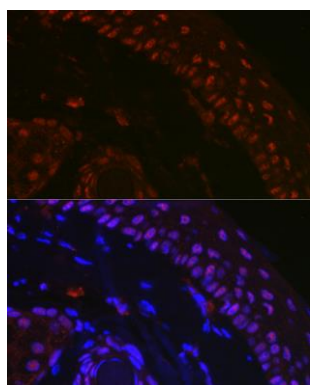
Western blot analysis of extracts of 293T cells, using TP73 antibody (CAB0385) at 1:1000 dilution. Secondary antibody: HRP Goat Anti-Rabbit IgG (H+L) (CABS014) at 1:10000 dilution. Lysates/proteins: 25ug per lane. Blocking buffer: 3% nonfat dry milk in TBST. Detection: ECL Basic Kit (CABM00020). Exposure time: 180s.



Immunohistochemistry of paraffin-embedded human lymph node using TP73 Rabbit pAb (CAB0385) at dilution of 1:100 (40x lens).



Immunohistochemistry of paraffin-embedded human esophageal using TP73 Rabbit pAb (CAB0385) at dilution of 1:100 (40x lens).



Immunofluorescence analysis of mouse skin using TP73 Rabbit pAb (CAB0385) at dilution of 1:100 (40x lens). Blue: DAPI for nuclear staining.